

前言 Introduction

本零件目录为标准型号。

This parts catalog refers to standard model.

如果您购买的是定制机，有些零件可能会有所不同，有需要时请于我们联系。

Some parts maybe different when your machine is customized. Contact us when necessary.

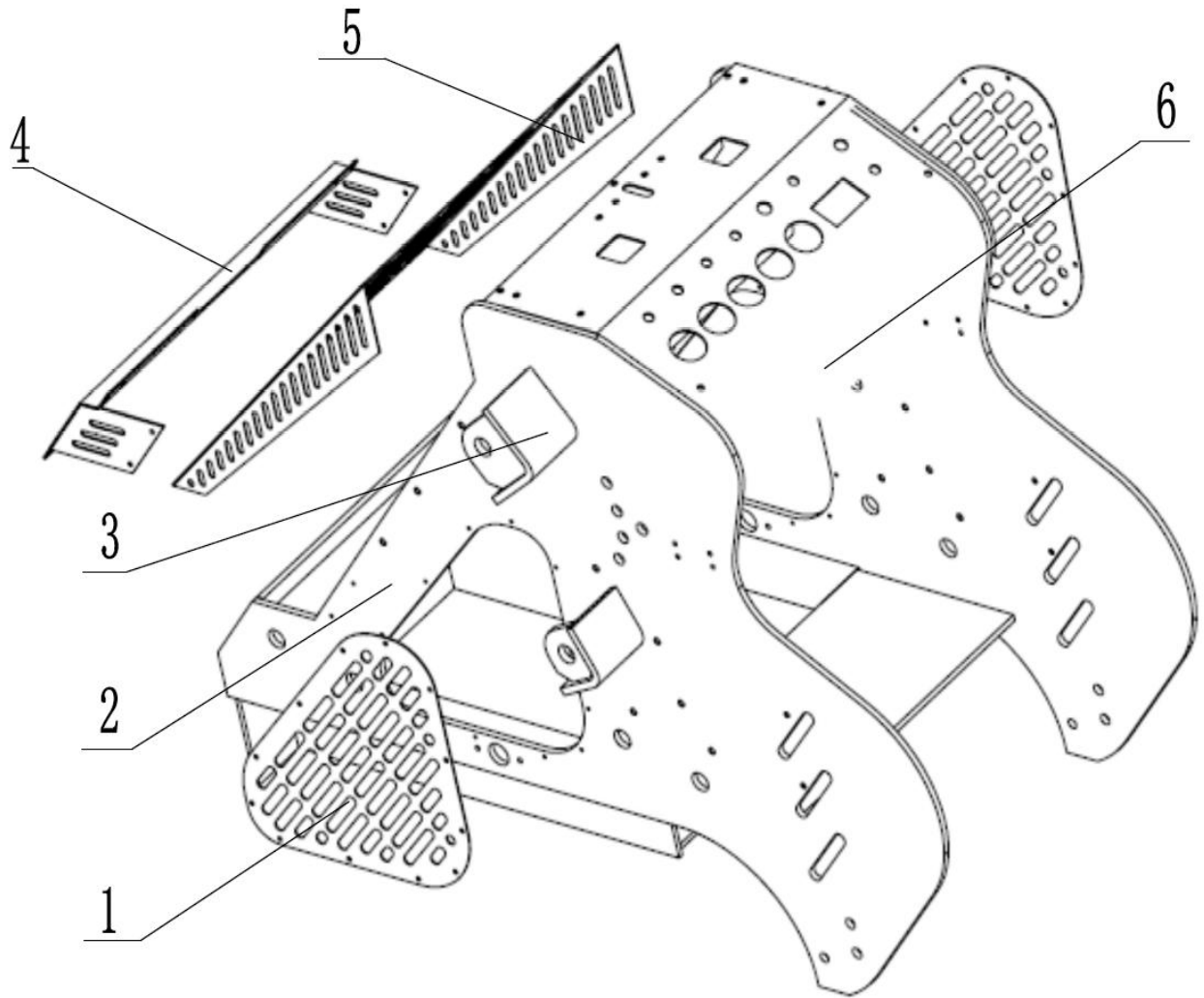
本零部件图册如有更改，恕不另行通知。

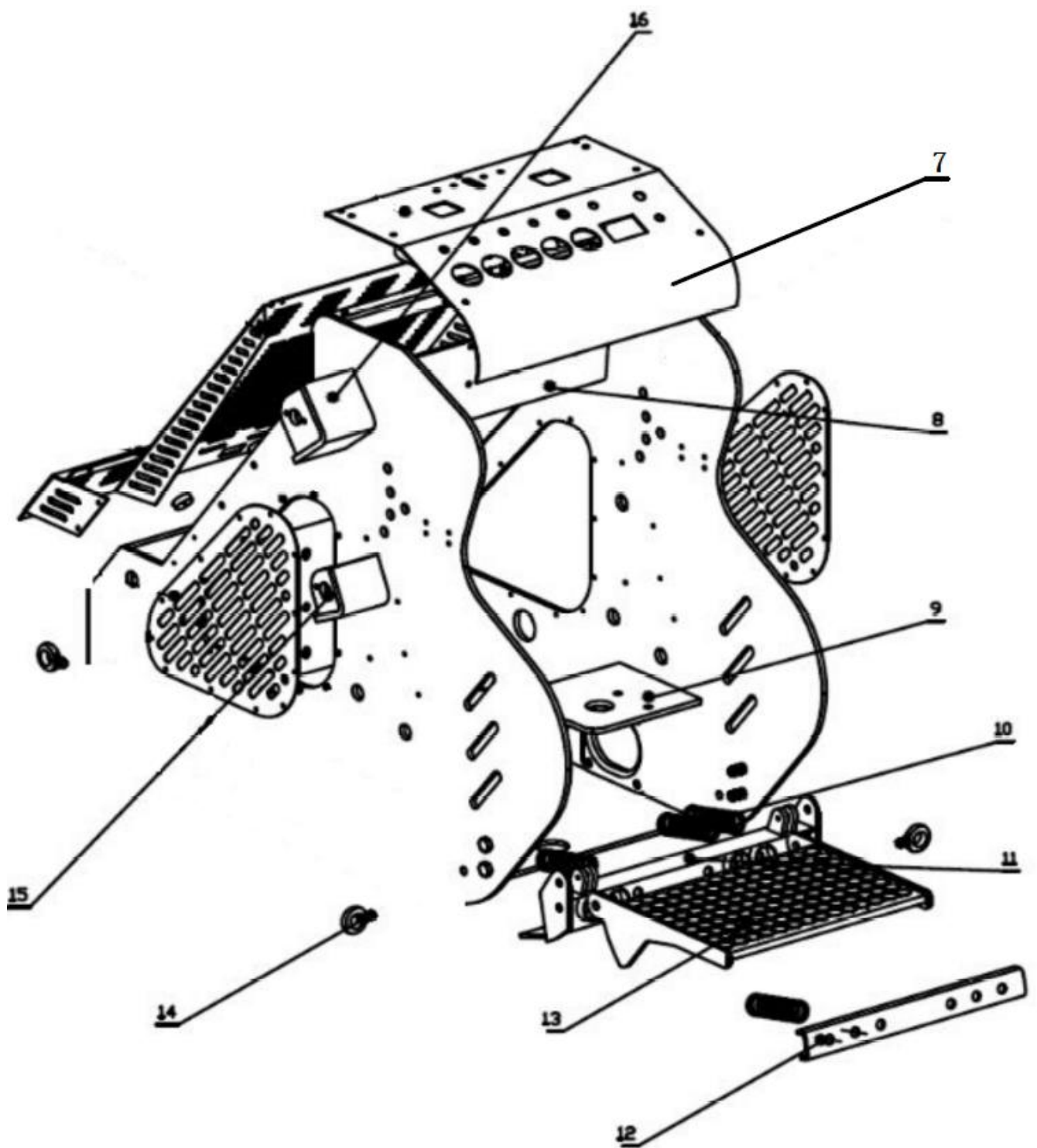
This parts catalog is subject to change without notice.

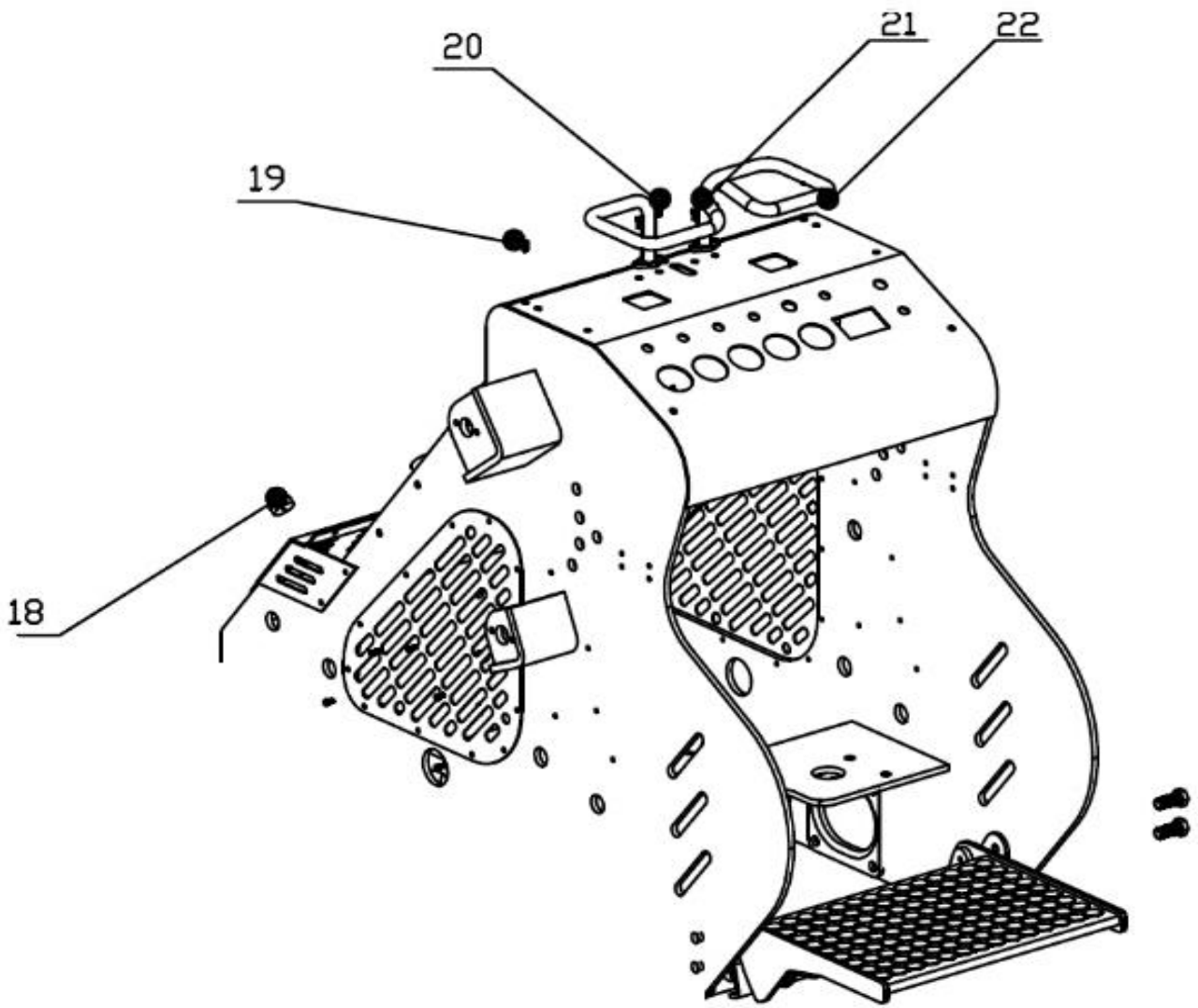
目录 Contents

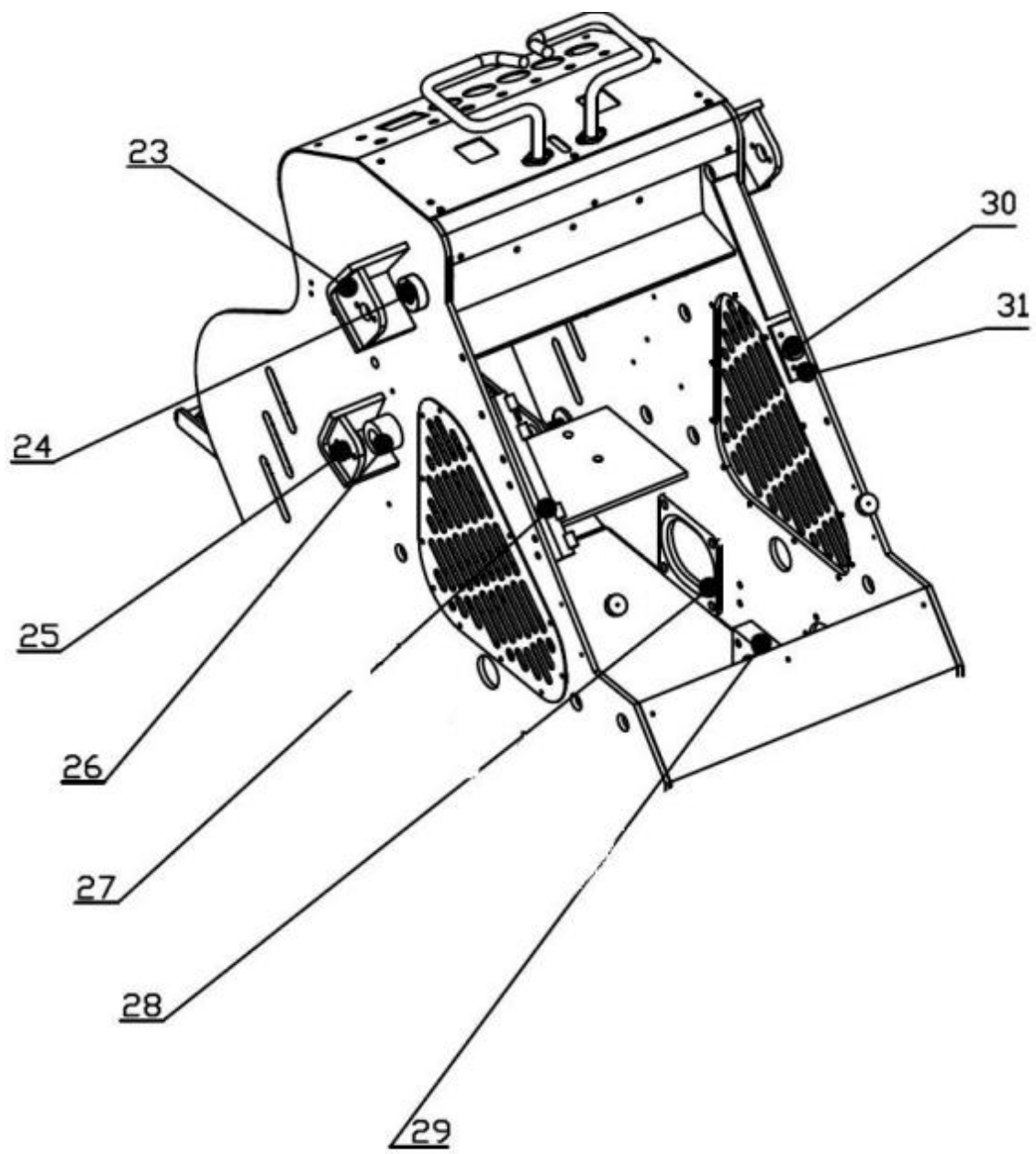
| | |
|--|----|
| 1.车体 Body Assy..... | 1 |
| 2.履带底盘总成 Crawler assembly..... | 6 |
| 3. 涨紧总成 When tight assembly | 8 |
| 4. 油箱 Oil Tank | 11 |
| 5.举升臂 Lift Arm Assy..... | 14 |
| 6.挂架和铲斗 Attachment Coupler and Bucket..... | 16 |
| 7.动力系统 Power System | 17 |
| 8.散热器 Radiator Assy..... | 20 |
| 9.操作部分 Operation Assy..... | 22 |
| 10. 电器系统 Electric System..... | 23 |
| 11.液压系统 Hydraulic System | 27 |

1. 车架总成 Body Assy





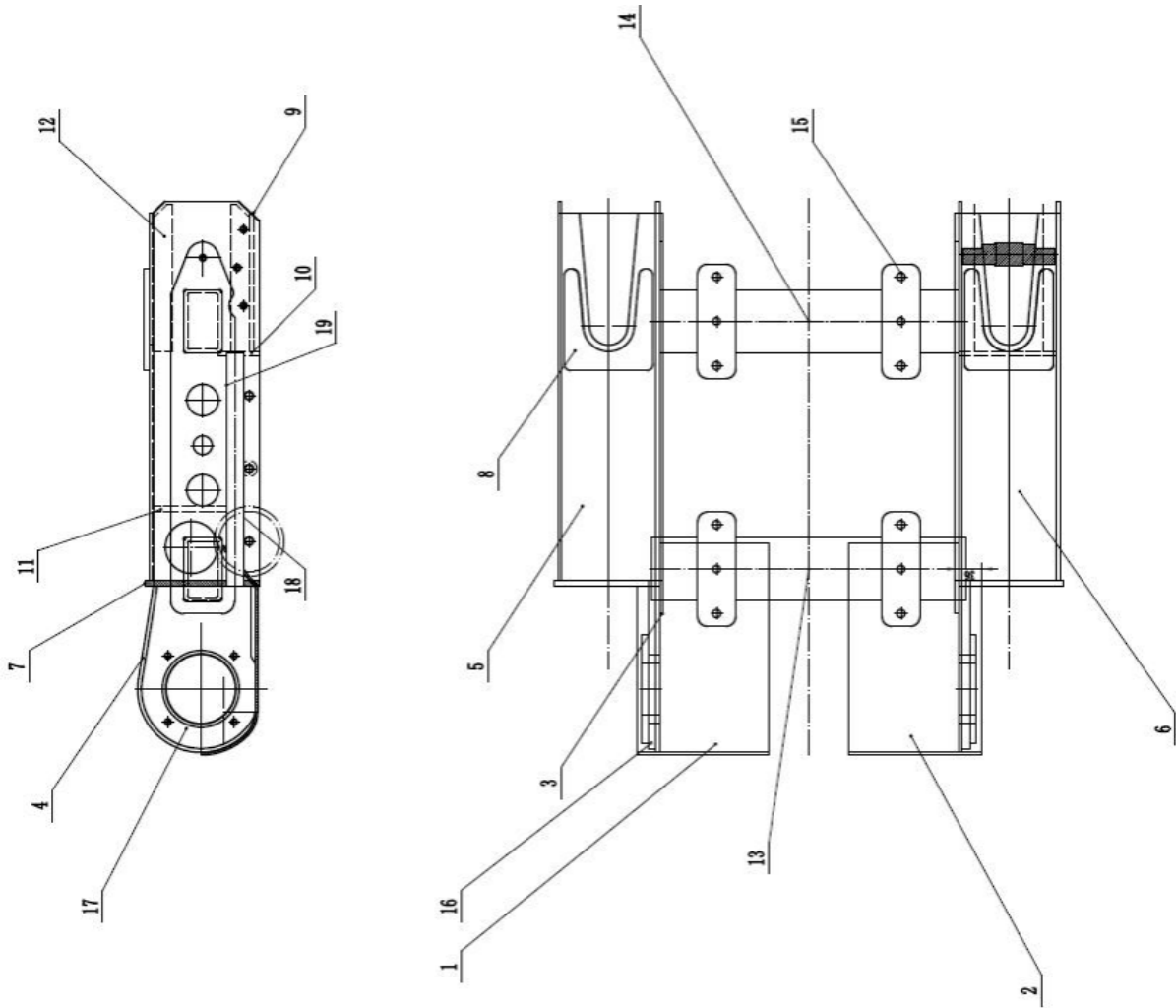




Body Assy 车体总成

| No | Part No | 名称 | Description | Q'ty | Remark |
|----|---------------|-----------|-------------------------------|------|--------|
| 1 | CG823-CJ-3001 | 侧板护罩 | Side panel cover | 1 | |
| 2 | CG823-02 | 左侧板 | Left side plate | 2 | |
| 3 | CG823WT-05 | 车架固板盖板总成 | Assembly frame plate | 1 | |
| 4 | | 固定盖板门锁 | Stationary flat door lock | 1 | |
| 5 | CG823-06 | 前罩总成 | Front cover assembly | 1 | |
| 6 | CG823-071 | 右侧板 | Right side plate | 1 | |
| 7 | CG823-CJ-3002 | 仪表面板焊合 | Meters board | 1 | |
| 8 | CG823-CJ-3006 | 工作阀支座弯板 | Valve bearing bending plate | 1 | |
| 9 | CG823-CJ-3013 | 发动机车架支座 | The engine frame support | 1 | |
| 10 | | 踏板气弹簧 | Air Spring | 4 | |
| 11 | CG823-JT-3600 | 脚踏板 | The pedals | 1 | |
| 12 | CG823-JT-3609 | 压板 | Clamp | 1 | |
| 13 | CG823-JT-3608 | 花纹钢板 | Plate | | |
| 14 | DIN5480M14 | 吊环螺丝 | Lifting eyebolt | 4 | |
| 15 | CG823-CJ-3017 | 油缸左支点 | Oil cylinder left fulcrum | 2 | |
| 16 | CG823-CJ-3008 | 左动臂支点 | Left movable arm pivot | 2 | |
| 17 | GB/T5783-2000 | 螺栓 M16*25 | Bolt M16*25 | 4 | |
| | GB/93-1987 | 弹垫 6 | Spring Washer 16 | 4 | |
| | GB/T95-2002 | 平垫 6 | Washer 16 | 4 | |
| 18 | | 减震垫 | Cushioning | 2 | |
| 19 | GB/T5783-2000 | 螺栓 M6*10 | Bolt M6*10 | 9 | |
| | GB/93-1987 | 弹垫 6 | Spring washer 6 | 9 | |
| | GB/T95-2002 | 平垫 6 | Washer 6 | 9 | |
| 20 | GB/T5783-2000 | 螺栓 M6*20 | Bolt M6*20 | 4 | |
| | GB/93-1987 | 弹垫 6 | Spring washer 20 | 4 | |
| | GB/T95-2002 | 平垫 6 | Washer 6 | 4 | |
| 21 | CG823-073 | 左把手合件 | Left hand hold | 1 | |
| 22 | CG823-072 | 右把手合件 | Right hand hold | 1 | |
| 23 | CG823-CJ-3009 | 右动臂支点 | Movable arm right protection | 1 | |
| 24 | CG823-CJ-3010 | 圆盘 | Disc | 2 | |
| 25 | CG823-CJ-3018 | 油缸右支点 | Oil cylinder right protection | 1 | |
| 26 | CG823-CJ-3011 | 圆盘 | Disc | 2 | |
| 27 | CG823-092 | 车架支座 | Frame support | 1 | |
| 28 | CG823-CJ-3020 | 曙纹加强板 | Thread reinforcing plate | 4 | |
| 29 | CG823-CJ-3015 | 马达支座 | The motor support | 2 | |
| 30 | | 减震垫 | Cushioning | 1 | |
| 31 | CG823-CJ-095 | 托架 | Bracket | 1 | |

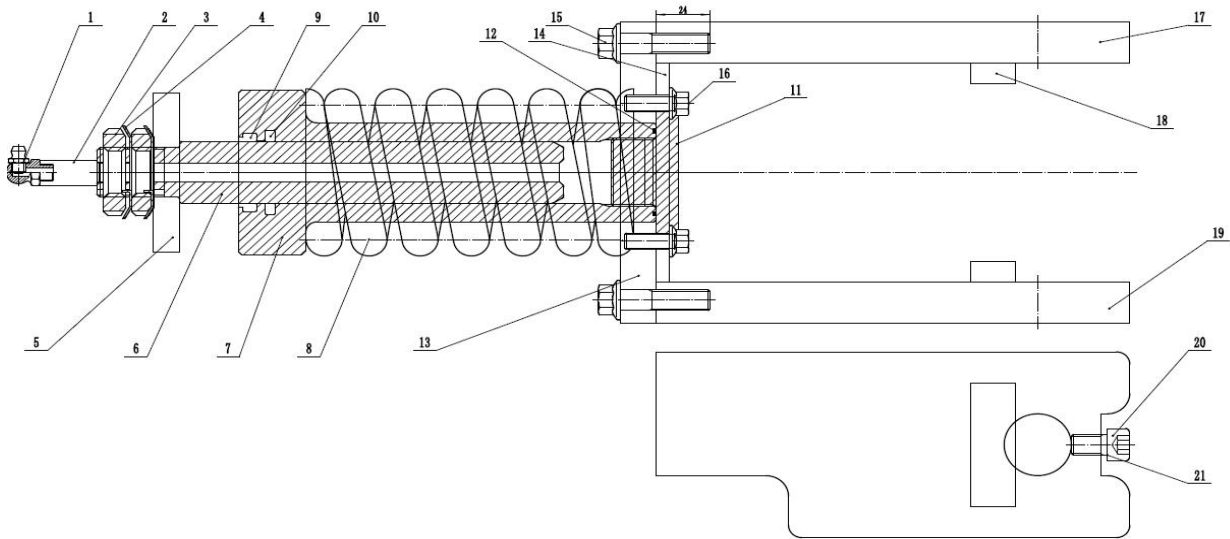
2. 履带底盘总成 Crawler assembly



Crawler assembly 履带底盘总成

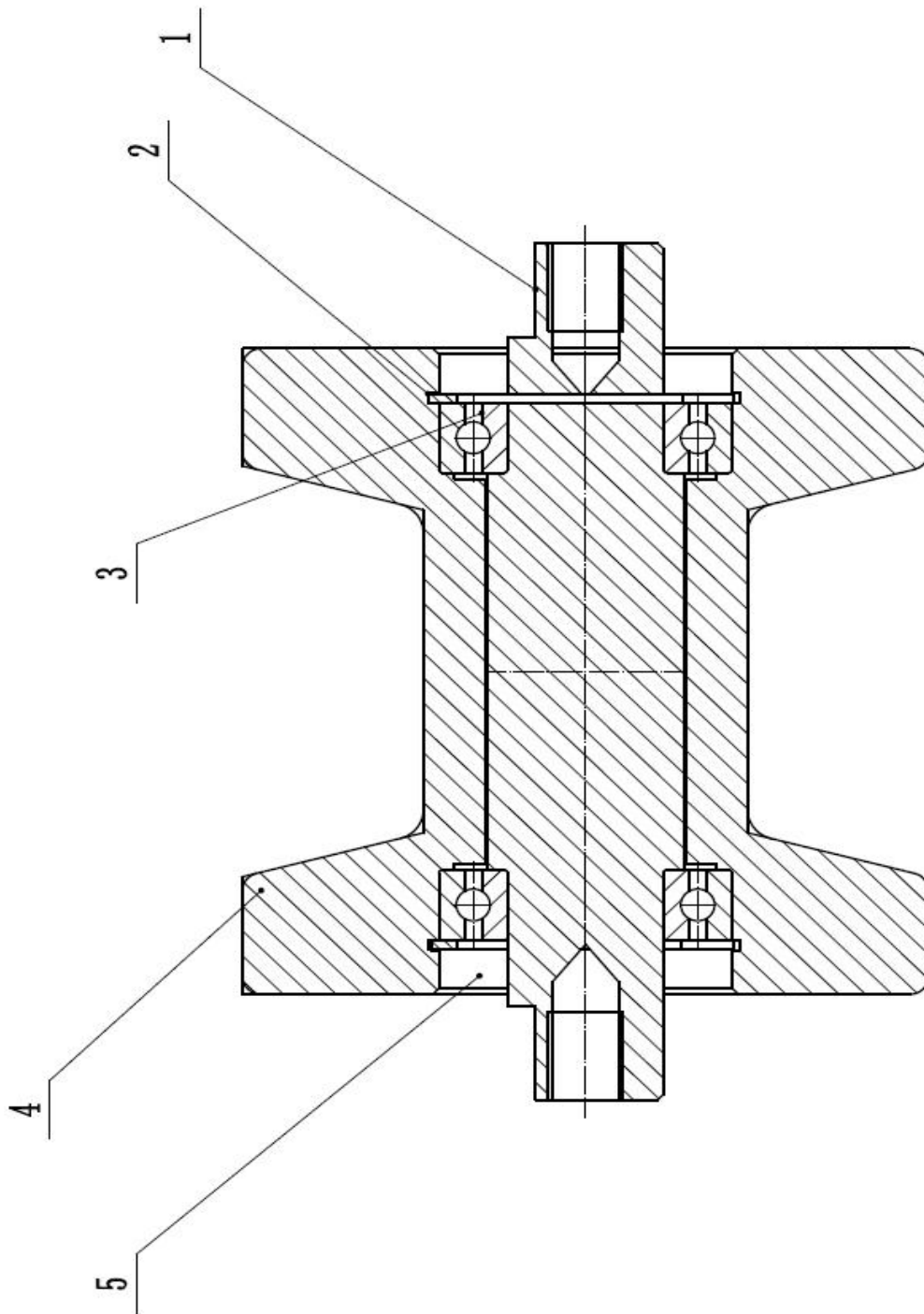
| No | Part No | 名称 | Description | Q'ty | Remark |
|----|--------------|-------|-----------------------------------|------|--------|
| 1 | CG823-DP-31 | 马达左护罩 | The motor left shield | 1 | |
| 2 | CG823-DP-30 | 马达右护罩 | The motor right shield | 1 | |
| 3 | CG823-DP-29 | 侧板加强板 | Lateral plate reinforcement plate | 1 | |
| 4 | CG823-DP-27 | 侧板 | The side panel | 2 | |
| 5 | CG823-DP-21 | 左弯板 | Left the plate | 1 | |
| 6 | CG823-DP-20 | 右弯板 | Right the plate | 1 | |
| 7 | CG823-DP-27 | 堵板 | boards | 2 | |
| 8 | CG823-DP-22 | 上加强板 | The reinforcing plate | 2 | |
| 9 | CG823-DP-23 | 下加强板 | The reinforcing plate | 2 | |
| 10 | CG823-DP-26 | 前连接板 | Before connecting plate | 2 | |
| 11 | CG823-DP-25 | 涨紧阻止板 | When tight stop board | 2 | |
| 12 | CG823-DP-35 | 引导轮 | Guide wheel | 8 | |
| 13 | CG823-DP-33 | 前方管 | In front of the tube | 1 | |
| 14 | CG823-DP-32 | 后方管 | The rear tube | 1 | |
| 15 | CG823-DP-37 | 固定板 | Fixed plate | 4 | |
| 16 | CG823-DP-60 | 马达加强板 | The motor reinforcing plate | 2 | |
| 17 | CG823-DP-11 | 马达支撑套 | Motor support | 2 | |
| 18 | | | | | |
| 19 | GB/1096-2003 | 普通平键 | Ordinary flat key | 4 | |
| 20 | | | | | |
| 21 | | | | | |
| 22 | | | | | |
| 23 | | | | | |
| 24 | | | | | |
| 25 | | | | | |

3. 涨紧总成 When tight assembly



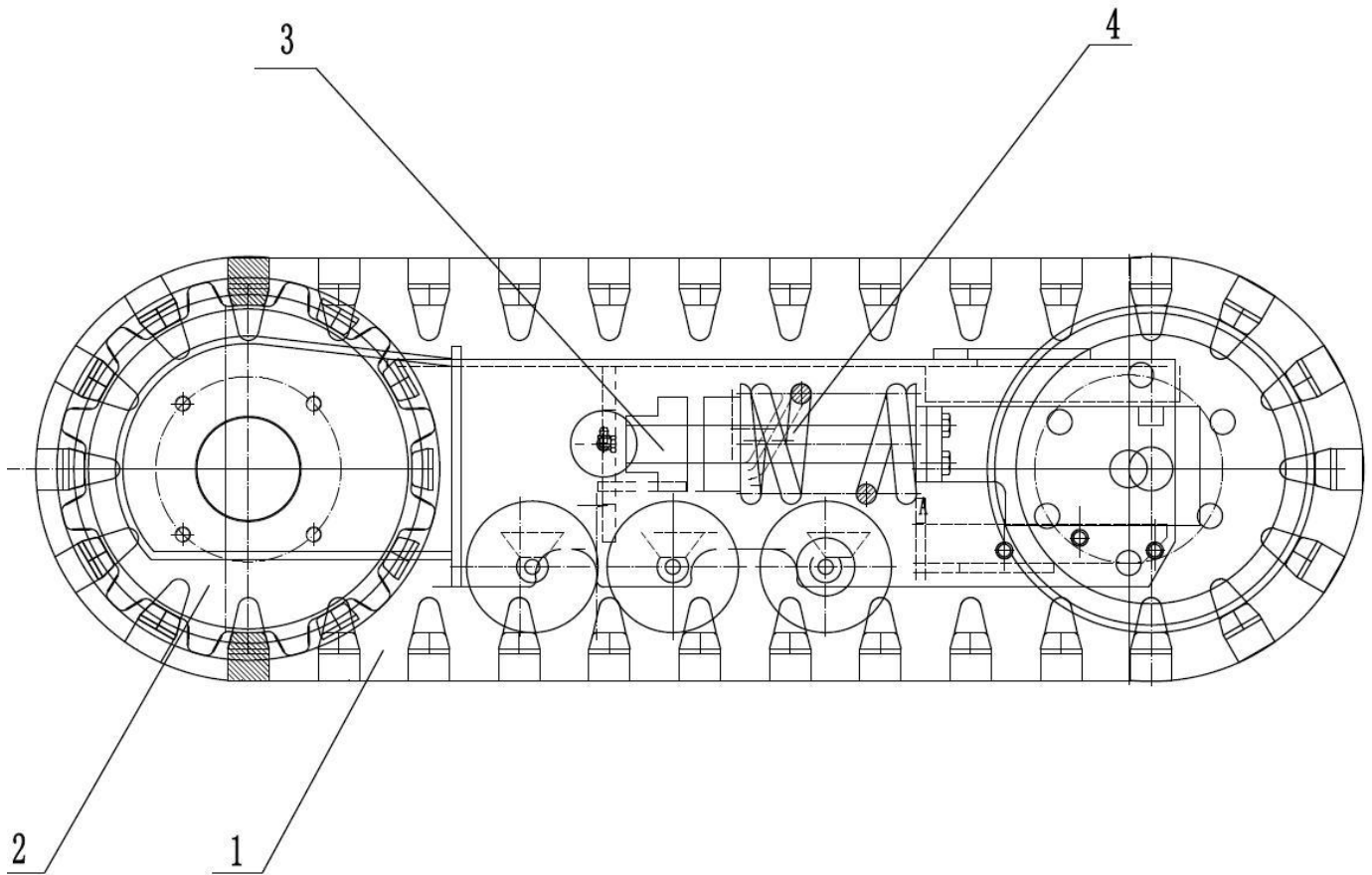
| No | Part No | 名称 | Description | Q'ty | Remark |
|----|------------------|-----------------|-----------------------------------|------|--------|
| 1 | JB/T7940.2-1995 | M8*1 油杯 | M8 * 1 oil cup | 2 | |
| 2 | | 回止阀 M10*1 | Valve M10*1 | 4 | |
| 3 | GB/T812-1988 | 圆螺母 M24*1.5 | Round nut m2-m24 * 1.5 | 4 | |
| 4 | GB/T858-1988 | 圆螺母止动垫圈 | Round nut washer | 4 | |
| 5 | CG823-DP-56 | 挡板 | baffle | 2 | |
| 6 | CG823-DP-06 | 涨紧缸杆 | When tight cylinder rod | 2 | |
| 7 | CG823-DP-07 | 涨紧缸筒 | When tight cylinder | 2 | |
| 8 | CG823-DP-05 | 涨紧缓冲簧 | When tight buffer spring | 2 | |
| 9 | | 防尘密封圈 | The dust-proof sealing ring | 2 | |
| 10 | | 斯特封 | The stern sealing diameter of 30 | 2 | |
| 11 | CG823-DP-08 | 涨紧缸筒螺纹堵 | When tight cylinder screw | 2 | |
| 12 | | 内径 38*1.65 O 型圈 | Ring 38*1.65 O | 2 | |
| 13 | CG823-DP-50 | 导向连接板 | Orientation connection plate | 2 | |
| 14 | CG823-DP-39 | 涨紧缸锁止板 | When tight cylinder locking plate | 2 | |
| 15 | GB/T16674.1-2004 | 六角法兰面 M0*35 | Hex flange surface | 8 | |
| 16 | GB/T16674.1-2004 | 六角法兰面 M8*20 | Hex flange surface | 8 | |
| 17 | CG823-DP-51 | 左导向板 | The left guide board | 2 | |
| 18 | CG823-DP-59 | 止动板 | Locking plate | 4 | |
| 19 | CG823-DP-52 | 右导向板 | Guide plates are right | 2 | |
| 20 | GB/T70.1-2008 | 内六角圆柱头螺钉 | Hex cylinder head screw | 2 | |
| 21 | GB/T70.1-2008 | 内六角圆柱头螺钉 | Hex cylinder head screw | | |

3.2 支重轮总成（选配 1） **Roller assembly**



| No | Part No | 名称 | Description | Q'ty | Remark |
|----|----------------|------------------|-------------------------------|------|--------|
| 1 | CG823-DP-10 | 支撑轮轴 | Support shaft | 6 | |
| 2 | GB/T893.1-1986 | A 型孔用弹性挡圈 | Type A hole with elastic ring | 12 | |
| 3 | GB/T276-1994 | 深沟球轴承 6005Z-2Z | Deep groove ball bearing | 2 | |
| 4 | CG823-DP-09 | 支撑轮 | Return roller | 6 | |
| 5 | | 直径 47*直径 25*7 油封 | Oil seal | 12 | |

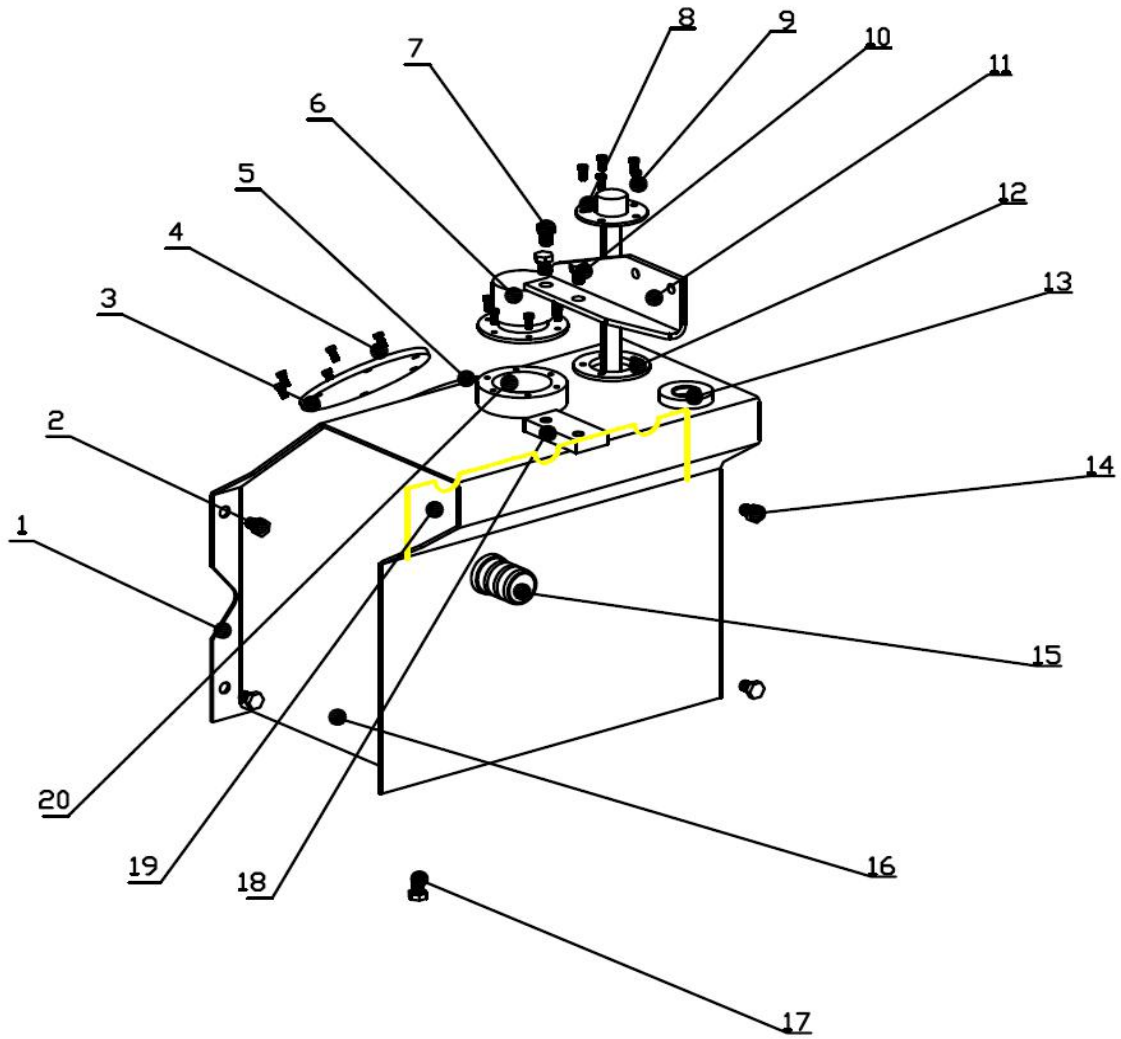
3.3 履带总成 Crawler assembly



| No | Part No | 名称 | Description | Q'ty | Remark |
|----|-------------|-------|--------------------------|------|--------|
| 1 | CG823-DP-12 | 履带 | caterpillar | 1 | |
| 2 | CG823-DP-13 | 驱动链轮 | Drive sprocket | 2 | |
| 3 | CG823-DP-14 | 涨紧杆杆 | When tight lever | 2 | |
| 4 | CG823-DP-15 | 涨紧缓冲簧 | When tight buffer spring | 2 | |
| 5 | | | | | |

4. 油箱 Oil Tank

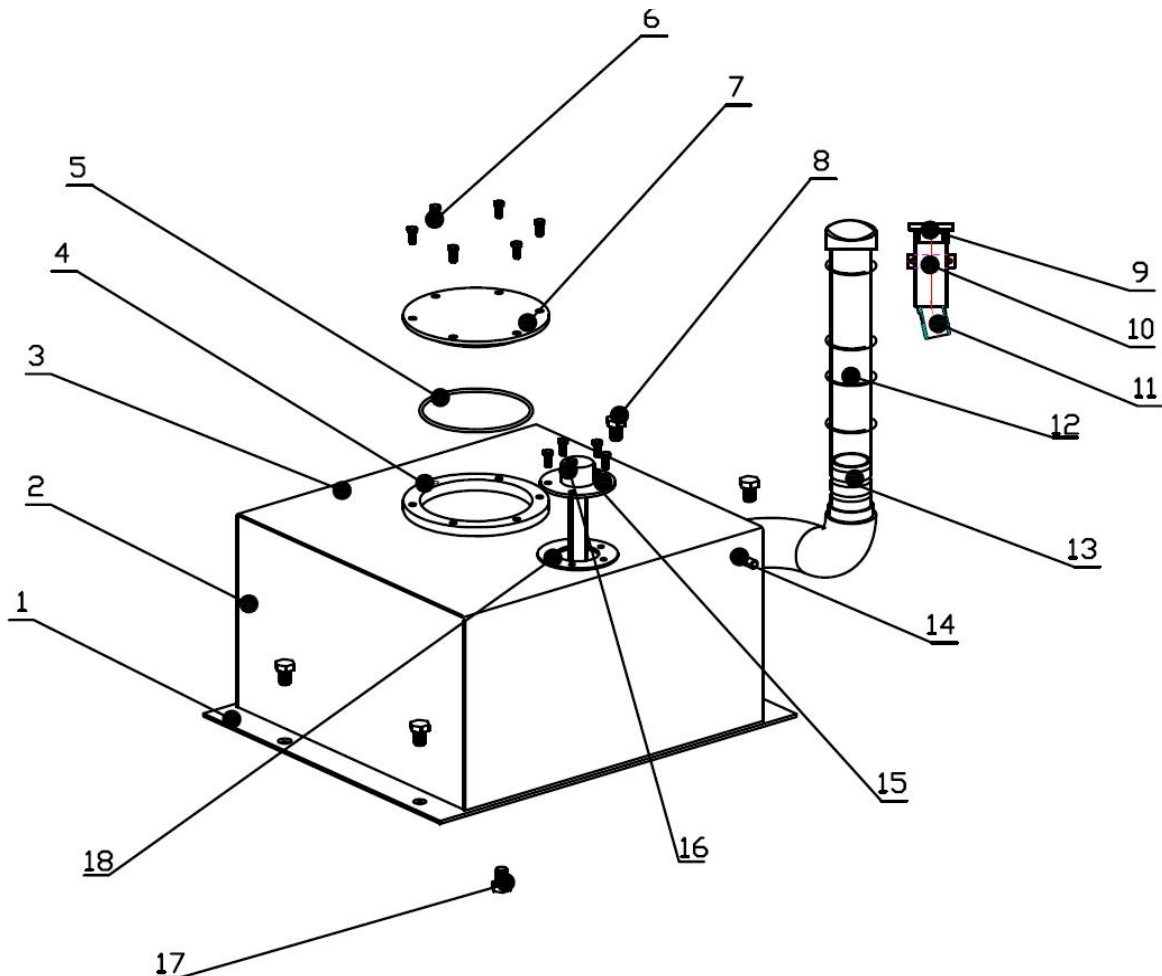
4.1 液压油箱 Hydraulic oil tank



| No | Part No | 名称 | Description | Q'ty | Remark |
|----|--------------------|-----------------|-----------------------|------|--------|
| 1 | CG823-YX-0100 1 | 油箱弯板 | Tank of bending plate | 1 | 借用 |
| 2 | GB/T70.1-2000 | 内六角圆柱头螺钉 M10*35 | Screw M10*35 | 2 | 借用 |
| | GB/T95-2002 | 平垫 10 | Washer 10 | 2 | 借用 |
| | GB/T93-1987 | 弹垫 10 | Spring Washer 10 | 2 | 借用 |
| 3 | CG823-RX-3508 | 法兰盖 | Flange cover | 4 | 借用 |
| 4 | GB/T5783-2000 | 螺栓 M5*10 | Bolt M5*10 | 6 | 借用 |
| | GB/T93-1987 | 弹垫 6 | Spring washer 5 | 6 | 借用 |
| 5 | CG823-YX-0100 5 | 法兰座 | Flange seat | 1 | 借用 |
| 6 | | 油箱盖呼吸器 | The cap respirator | 1 | 借用 |
| 7 | GB/T5783-2000 | 螺栓 M5*10 | Bolt M5*10 | 5 | 借用 |
| | GB/T98-2002 | 平垫 8 | Washer 5 | 5 | 借用 |
| | GB/T93-1987 | 弹垫 8 | Spring Washer 5 | 5 | 借用 |
| 8 | | 油位传感器 | Oil level sensor | 1 | 借用 |
| 9 | GB/T5783-2000 | 螺栓 M5*10 | Bolt M5*10 | 5 | 借用 |
| | GB/T98-2002 | 平垫 8 | Washer 5 | 5 | 借用 |

| | | | | | |
|----|----------------|-----------------|-------------------------------------|---|----|
| | GB/T93-1987 | 弹垫 8 | Spring Washer 5 | 5 | 借用 |
| 10 | GB/T5783-2000 | 螺栓 M10*20 | Bolt M10*25 | 1 | 借用 |
| | GB/T98-2002 | 平垫 10 | Washer 10 | 1 | 借用 |
| | GB/T93-1987 | 弹垫 10 | Spring Washer 10 | 1 | 借用 |
| 11 | CG823-02000 | 滤油器支座弯板 | Oil filter bearing bending plate | 1 | 借用 |
| 12 | CG823-02001 | 油位传感器座板 | Oil level sensor plate | | 借用 |
| 13 | 823-YX-01008 | 丝座 G3/4-14 | Silk cityG3/4-14 | 1 | 借用 |
| 14 | GB/T70.1-2000 | 内六角圆柱头螺钉 M10*35 | Screw M10*35 | 2 | 借用 |
| | GB/T95-2002 | 平垫 10 | Washer 10 | 2 | 借用 |
| | GB/T93-1987 | 弹垫 10 | Spring Washer 10 | 2 | 借用 |
| 15 | 823-YX-01003 | 吸油管总成 | Suction tubing assembly | 1 | 借用 |
| 16 | 823-YYYX-01002 | 液压油箱底弯板 | The hydraulic oil tank bottom plate | 1 | 借用 |
| 17 | 4TN-12 | 螺堵 RC3/4 | Bolt RC3/4 | 1 | 借用 |
| 18 | 823-YX-01010 | 固定板 | Fixed plate | 1 | 借用 |
| 19 | 823-YX-01011 | 隔板 | Partition | 1 | 借用 |
| 20 | 823-YX-01007 | 加油口座 | Filler block | 1 | 借用 |
| | | | | | |

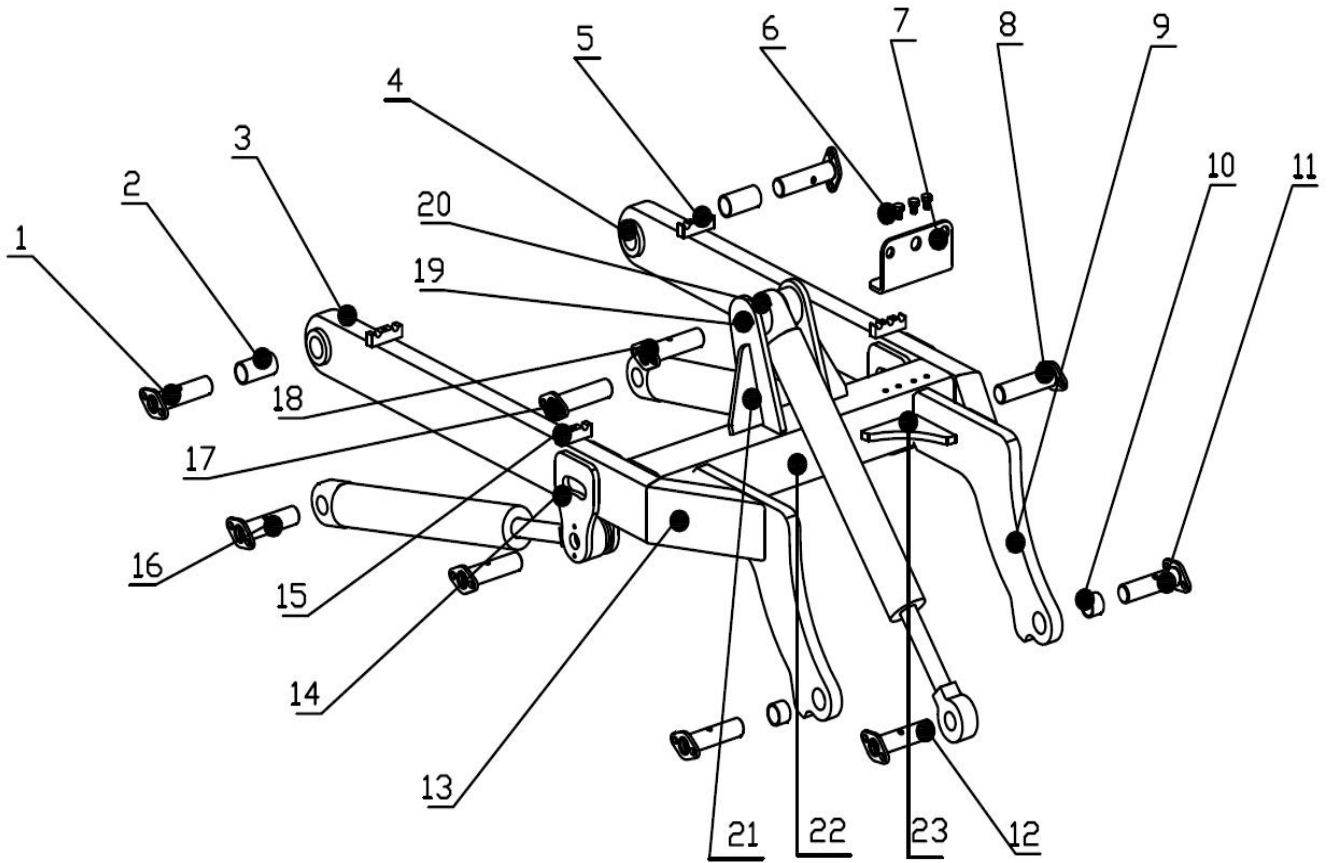
4.2 燃油箱 Fuel tank



4.2 燃油箱 Fuel tank

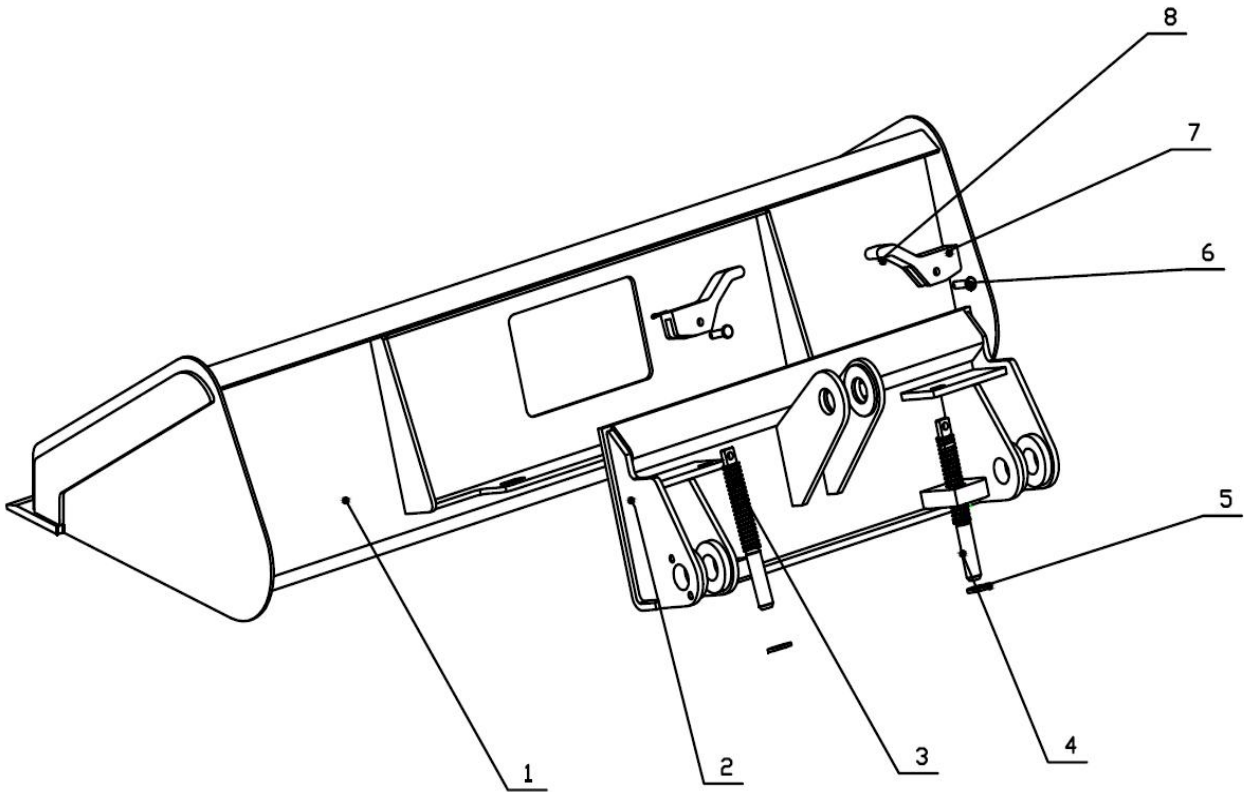
| No | Part No | 名称 | Description | Q'ty | Remark |
|----|----------------------|----------------|--------------------------------------|------|--------|
| 1 | CG823-CJ-3001 | 底板 | Bottom plate | 1 | 借用 |
| 2 | CG823-RX-3503 | 左侧板 | Left side plate | 1 | 借用 |
| 3 | CG823-RX-3502 | 顶板 | Roof plate | 1 | 借用 |
| 4 | CG823-YX-01005 | 法兰座 | Flange seat | 1 | 借用 |
| 5 | | O 形圈 106*100*3 | O-ring 106*100*3 | 1 | 借用 |
| 6 | GB/T1667.4-2004 | 六角法兰面螺栓 M6*10 | Hex flange bolts | 6 | 借用 |
| | GB/T95-2002 | 平垫 6 | Washer 6 | 6 | 借用 |
| | GB/T93-1987 | 弹垫 6 | Spring 6 | 6 | 借用 |
| 7 | CG823-RX-3508 | 法兰盖 | Flange cover | 1 | 借用 |
| 8 | GB/T5783-200 | 螺栓 M0*20 | Bolt M10*20 | 4 | 借用 |
| 9 | | 油箱盖 | The cap | 1 | 借用 |
| 10 | F4010111X0009-YZ | 加油口座 | Filler block | 1 | 借用 |
| 11 | CG823-YX-010030 1 | 直径 38 竹节管 | 38 corrugated pipe | | 借用 |
| 12 | | 耐油管 | Resistance of tubing | 1 | 借用 |
| 13 | | 直径 48 冲压弯头 | Diameter of the 48 stamping elbow | 1 | 借用 |
| 14 | CG823-RX-3505 | 吸油管 | Suction tubing | 1 | 借用 |
| 15 | | 油位传感器 | Oil level sensor | 1 | 借用 |
| 16 | GB/T818-2000 | 十字槽盘头螺钉 | The trough pan head screws | 5 | 借用 |
| 17 | 4TN-12 | 螺堵 RC3/4 | Plug RC3/4 | 1 | 借用 |
| 18 | CG823-YX-01006 | 油位传感器板 | Oil level sensor board | 1 | 借用 |

5. 举升臂总成 Lift Arm Assy



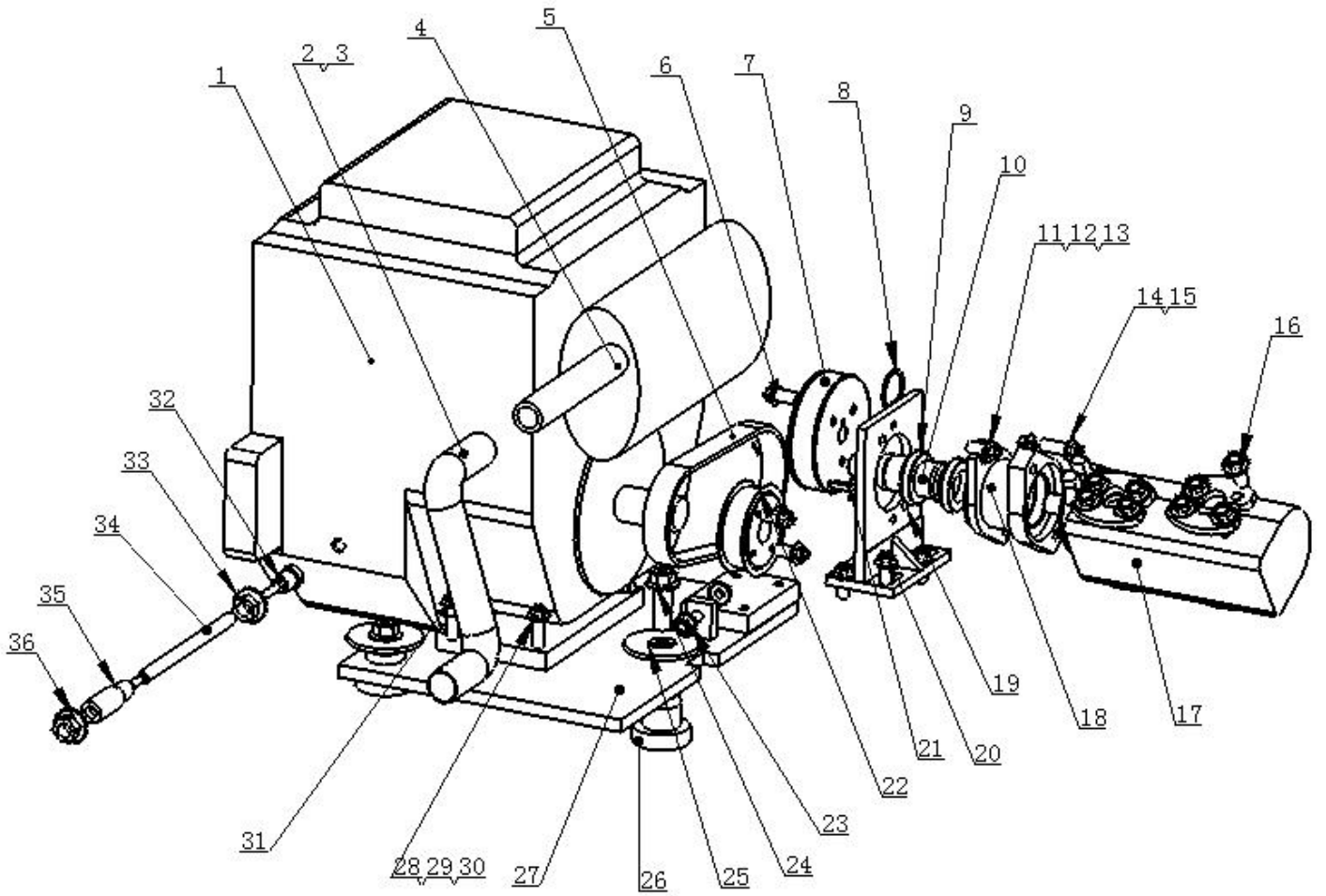
| No | Part No | 名 称 | Description | Q'ty | Remark |
|----|---------------------|----------|----------------------------|------|--------|
| 1 | CG823W-XZ-JS01 | 动臂上销轴 | Arm pin | 2 | 借用 |
| 2 | | 臂架套 | Bush | 2 | 借用 |
| 3 | CG823-db-5001 | 支臂 | The arm | 2 | 借用 |
| | GB/T1152-2000 | 油杯 M10*1 | Oil cup M10*1 | 4 | 借用 |
| 5 | CG823-DB-5015 | 管卡 A | Pipe clamp A | 2 | 借用 |
| 6 | GB/T5782-2000 | 螺栓 M8*25 | Bolt M8*25 | 4 | 借用 |
| | GB/T93-1987 | 垫圈 8 | Washer 8 | 4 | 借用 |
| | GB/T95-2002 | 垫圈 8 | Washer 8 | 4 | 借用 |
| 7 | CG823-DB-5017 | 快换支座 | Quick change bearing | 1 | 借用 |
| 8 | CG823-XZ-JSYG0 2 | 举升油缸前轴销 | Lifting cylinder front pin | 2 | 借用 |
| 9 | CG823-DB-5009 | 动臂前主板 | Arm motherboard | 2 | 借用 |
| 10 | | 斗臂套 | The bucket arm set | 2 | 借用 |
| 11 | CG823-XZ-JS02 | 斗臂销焊合 | Pin shaft bucket arm | 2 | 借用 |
| 12 | CG823-xz-zd00 2 | 转斗缸前销 | Bucket cylinder front pin | 1 | 借用 |
| 13 | CG823-DB-5009 | 动臂前主板 | Arm motherboard | 2 | 借用 |
| 15 | CG823-DB-5016 | 管卡 C | Pipe clamp C | 2 | 借用 |
| 16 | HK-823-XZ-ZD01 | 转斗缸后销 | Bucket cylinder rear pin | 2 | 借用 |
| 17 | CG823-XZ-JSYG0 1 | 举升油缸前销 | Lifting cylinder front pin | 2 | 借用 |
| 18 | CG823-XZ-DB01 | 转斗缸后销 | Bucket cylinder rear pin | 1 | 借用 |
| 19 | CG823-DB-5006 | 油缸支板 | Cylinder plate | 2 | 借用 |
| 20 | CG823-DB-5012 | 圆盘 | disc | 2 | 借用 |
| 21 | CG823-DB-5011 | 三角 | The triangle | 2 | 借用 |
| 22 | CG823-DB-5007 | 弯板 | Bending of plate | 1 | 借用 |
| 23 | CG823-DB-5010 | 主板三角 | The mainboard triangle | 2 | 借用 |
| | | | | | |

6. 属具挂架和铲斗 Attachment Coupler and Bucket



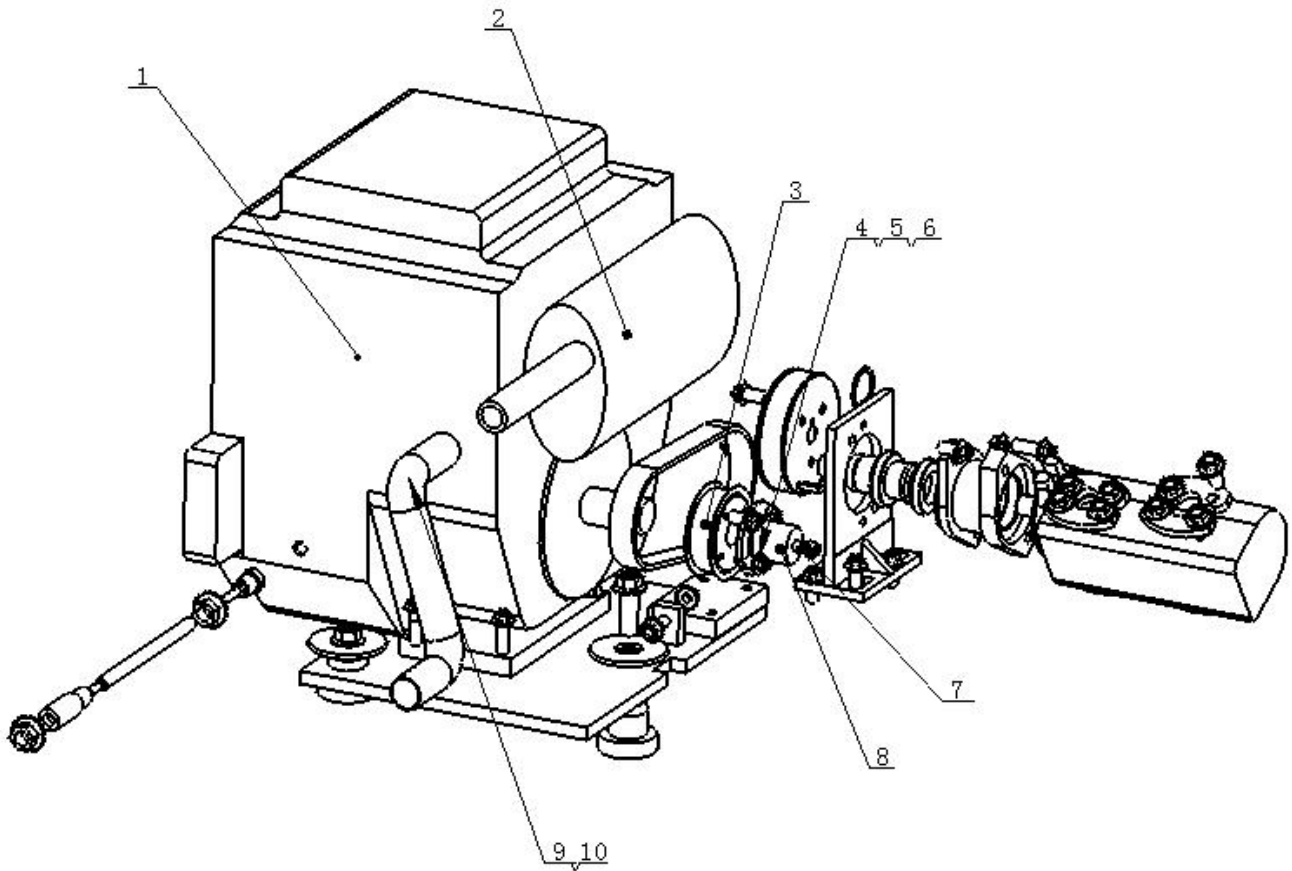
| No | Part No | 名称 | Description | Q'ty | Remark |
|----|---------------|------------|-----------------|------|--------|
| 1 | CG823-CD3600 | 铲斗焊合 | Bucket | 1 | 借用 |
| 2 | CG823-GJ-3700 | 挂架焊合 | Coupler | 1 | 借用 |
| 3 | | 弹簧 | Spring | 2 | 借用 |
| 4 | CG823-GJ3312 | 插销 | Pin | 2 | 借用 |
| 5 | | 连接座 | Connecting seat | 2 | 借用 |
| 6 | GB/T882-2000 | 销轴 | pin | 2 | 借用 |
| 7 | CG823-CD3800 | 手柄 | Handle | 1 | 借用 |
| 8 | GB/T91-2000 | 开口销 2.5*30 | Cotter pin | 2 | 借用 |

7. 动力系统 Power System



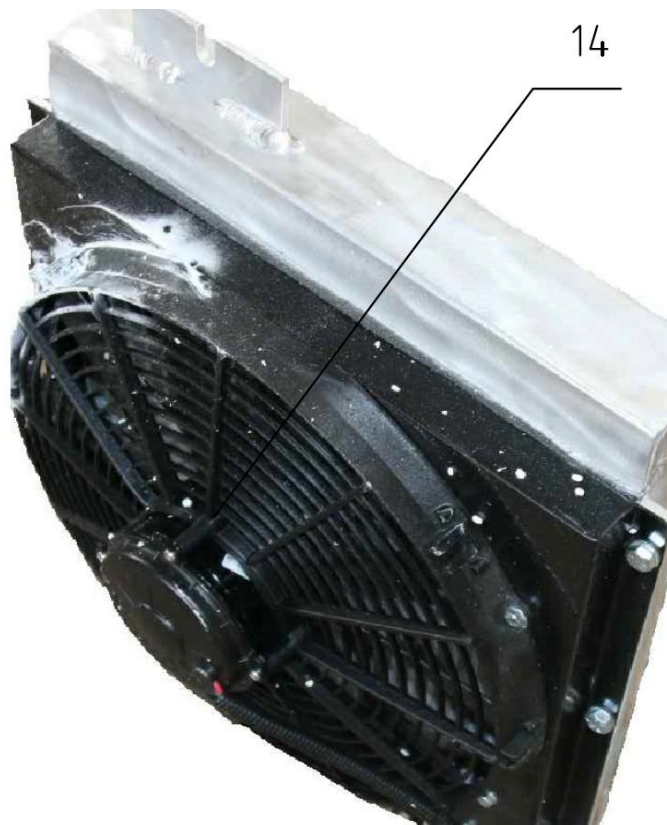
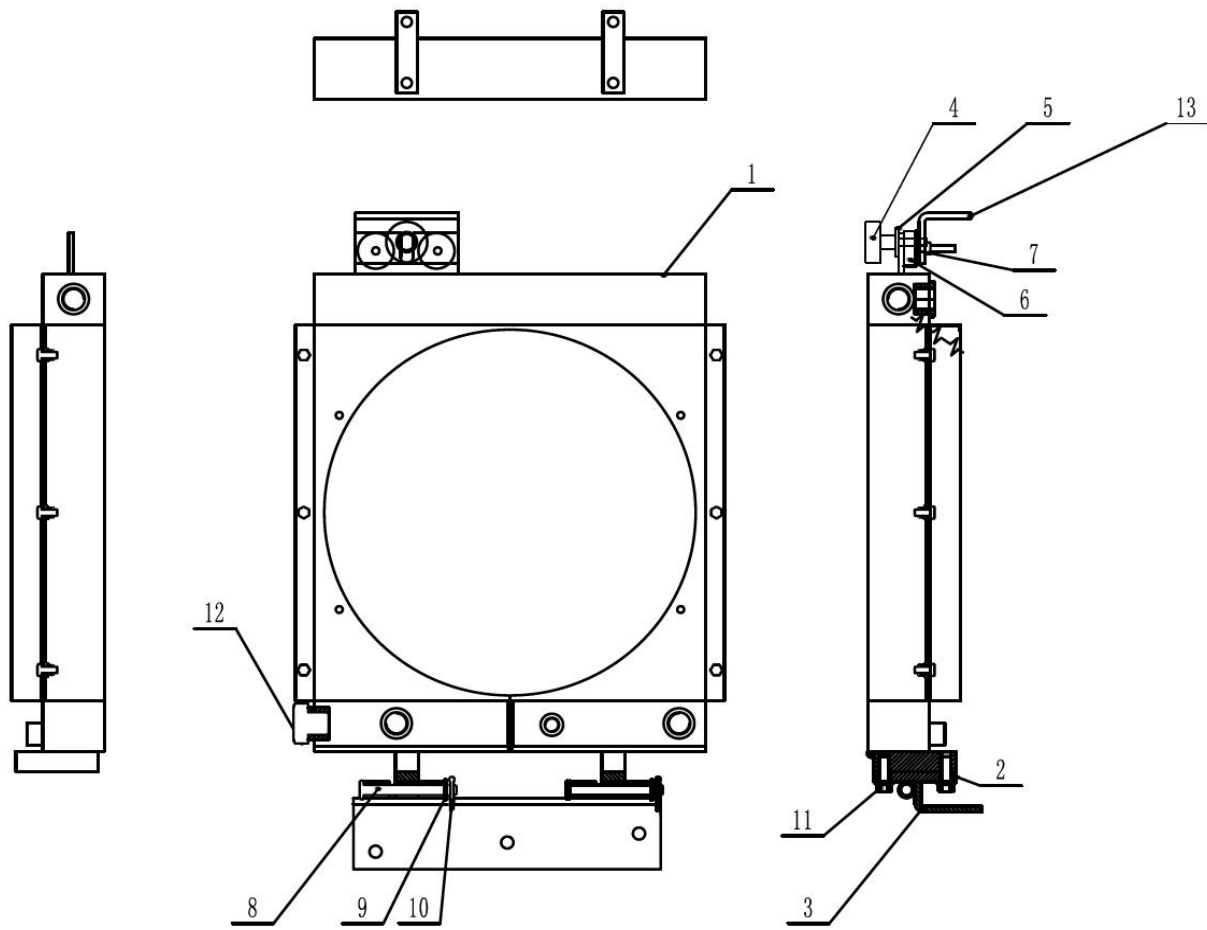
| No | Part No | 名称 | Description | Q'ty | Remark |
|----|-----------------|-----------------------|-----------------------------|------|----------|
| 1 | | 21HP 百利通直轴发动机 | 21HP B&S Engine | 1 | |
| | | 科勒发动机 | Kohler engine | 1 | Optional |
| 2 | CG823-0450001B | 消声器接管 | Muffler Connector | 1 | |
| | CG823-045001 | 消声器接管（自制消声器用） | Muffler Connector | 1 | Optional |
| 3 | 32-35 | T 型实心强力喉箍 | T type solid Clip | 1 | |
| 4 | | 消声器 | Muffler | 1 | 百利通自带 |
| | CG823-045000X | 进口消声器 | Imported muffler | | Optional |
| 5 | 640-8M-25 | 同步带 | Belt | 1 | |
| 6 | GB/T5782-2000 | M10*20 | Bolt M10*20 | 4 | |
| 7 | CG823-047000A | 长源双联齿轮泵同步带轮 | Belt wheel | 1 | |
| 8 | GB/T894.1 | 轴用挡圈 35 | Circlip 35 | 1 | |
| 9 | GB/T276-1994 | 轴承 61907-Z | Bearing 61907-Z | 2 | |
| 10 | CG823-040023 | 连接轴 | Connect shaft | 1 | |
| 11 | GB/T5782-2000 | 螺栓 M10*25 | Bolt M10*25 | 2 | |
| 12 | GB/T93-1987 | 弹垫 10 | Spring Washer 10 | 24 | |
| 13 | GB/T95-2002 | 平垫 10 | Washer 10 | 24 | |
| 14 | GB/T5782-2000 | 螺栓 M10*45 | Bolt M10*45 | 2 | |
| 15 | GB/T6170-2000 | 螺母 M10 | Nut M10 | 3 | |
| 16 | GB/T5786-2000 | 螺栓 M10*1.25*30（8.8 级） | Bolt M10*1.25*30 | 16 | |
| 17 | | 双联齿轮泵 | Gear pump | 1 | |
| 18 | CG823-049000 | 连接套焊接 | Connect sleeve | 1 | |
| 19 | CG823-043000A | 泵支架焊接 | Pump Bracket | 1 | |
| | CG823-043000 | 泵支架焊接 | Pump Bracket | 1 | Optional |
| 20 | GB/5782-2000 | 螺栓 M10*30 | Bolt M10*30 | 4 | |
| 21 | GB/T1096-2003 | 键 A 6*6*28 | Key A 6*6*28 | 1 | |
| 22 | CG823-046000A | 百利通发动机直轴皮带轮 | Belt wheel, B&S engine | 1 | |
| | CG823-046000C | 发动机同步带轮（科勒） | Belt wheel, Kohler engine | 1 | Optional |
| 23 | GB/T5782-2000 | 螺栓 M10*40 | Bolt M10*40 | 1 | |
| 24 | GB/T5782-2000 | 螺栓 M16*70（8.8 级） | Bolt M16*70(8.8 grade) | 3 | |
| 25 | GB/T5782-2000 | 特大垫圈 16-C 级 | Big Washer 16-C grade | 3 | |
| 26 | CG823-040200 | 减震块 | Cushion | 3 | |
| 27 | CG823-044000B | 发动机底板焊接（百利通） | Engine under plate(B&S) | 1 | |
| | CG823-044000X | 发动机底板焊接（科勒） | Engine under plate(Kohler) | 1 | Optional |
| 28 | GB/T5782-2000 | 螺栓 M8*50 | Bolt M8*50 | 2 | |
| 29 | GB/T93-1987 | 弹垫 8 | Spring Washer 8 | 4 | |
| 30 | GB/T95-2002 | 平垫 8 | Washer 8 | 4 | |
| 31 | GB/T5782-2000 | 螺栓 M8*40 | Bolt M8*40 | 2 | |
| 32 | CG823-042000X | 发动机放油接头 | Joint for oil drain, engine | 1 | |
| 33 | | 钢带型弹性喉箍 12 | Spring Clamp 12 | 2 | |
| 34 | CG823-040005 | 放油胶管 | Pipe for oil drain | 1 | |
| 35 | CG823-041000 | 车体放油接头 | Joint for oil drain, body | 1 | |
| | GB/T6172.1-2000 | 六角薄螺母 M18*1.5 | Nut M18*1.5 | 1 | |
| 36 | CG823-04004X | 螺堵 | Bolt | 1 | |

7.1 动力系统选配 Power System Optional



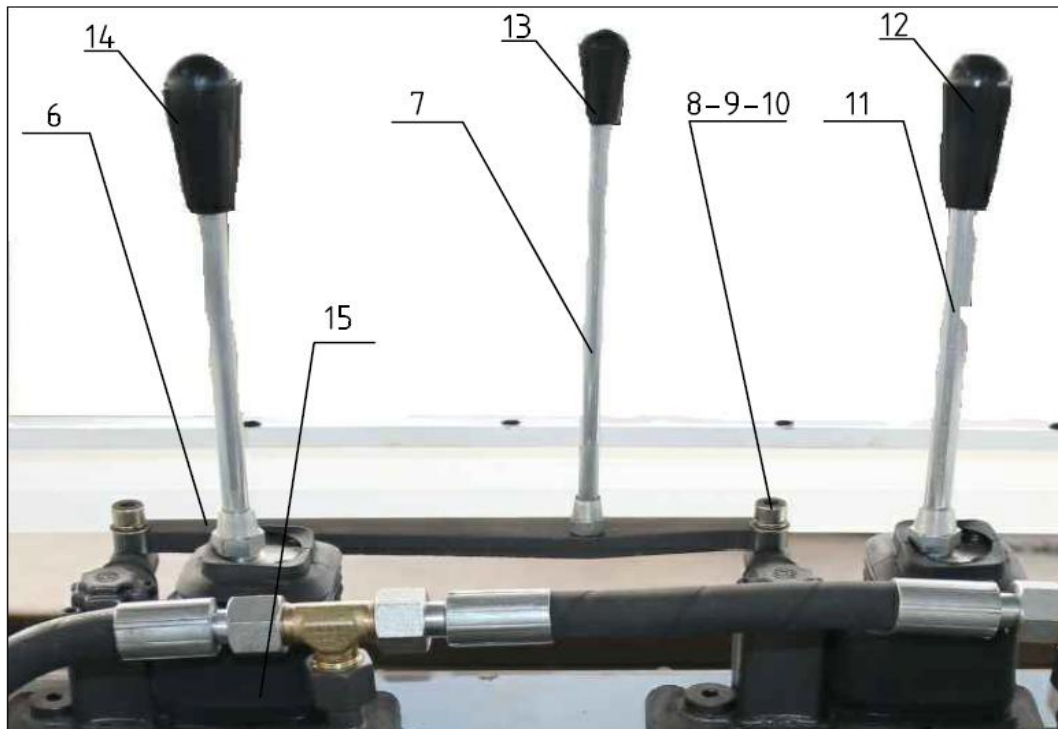
| No | Part No | 名称 | Description | Q'ty | Remark |
|----|---------------|----------------|-------------------|------|--------|
| 1 | | 20HP 百利通锥轴发动机 | 20 HP B&S engine | 1 | |
| 2 | CG823-045000A | 百利通消声器（自制） | B&S Muffler | 1 | |
| 3 | CG823-046000 | 发动机同步带轮（百利通锥轴） | Belt wheel | 1 | |
| 4 | GB/T5782-2000 | 螺栓 M8*40 | Bolt M8*40 | 4 | |
| 5 | GB/T93-1987 | 弹垫 8 | Spring Washer 8 | 4 | |
| 6 | GB/T95-2002 | 平垫 8 | Washer 8 | 4 | |
| 7 | CG823-040008 | 发动机螺栓 | Bolt | 1 | |
| 8 | CG823-040007 | 发动机隔套 | Engine Sleeve | 1 | |
| 9 | CG823-045001 | 消声器接管（自制消声器用） | Muffler connector | 1 | |
| 10 | 32-35 | T 型实心强力喉箍 | T type solid clip | 1 | |

8. 散热器总成 Radiator Assy



| No | Part No | 名称 | Description | Q'ty | Remark |
|----|------------------|-------------------|------------------------|------|--------|
| 1 | CG823W-YS-01 | 散热器总成 | Radiator assy | 1 | 借用 |
| 2 | CG823W-092 | 车架支座 | Frame support | 1 | 借用 |
| 3 | CG823W-093 | 支座 | Support | 2 | 借用 |
| 4 | SR5414-491328 | 软包胶旋钮 | Soft plastic bags knob | 1 | 借用 |
| 5 | GB/T5287-2002 | 特大垫圈 C 级 | Extra large washer C 级 | 1 | 借用 |
| 6 | SR5726-499431 | 橡胶固定胶 | Fixed rubber feet | 2 | 借用 |
| 7 | GB/T41-2000 | 六角螺母 C 级 M6 | Hexagonal nut C 级 M6 | 1 | 借用 |
| 8 | GB/T882-2000 | 销轴 10*90*3.2*85.5 | Pin10*90*3.2*85.5 | 2 | 借用 |
| 9 | GB/T95-2002 | 平垫圈 10 | Flat washer 10 | 2 | 借用 |
| 10 | GB/T91-2000 | 开口销 3.2*25 | Cotter pin3.2*25 | 2 | 借用 |
| 11 | GB/T16674.1-2004 | 六角法兰面 M10 | Hex flange surface | 2 | 借用 |
| 12 | | 内六油堵 | Oil plug | 2 | 借用 |
| 13 | CG823W-095 | 托架 | Bracket | 1 | 借用 |
| 14 | | 电子风扇 | Electronic fan | | 借用 |

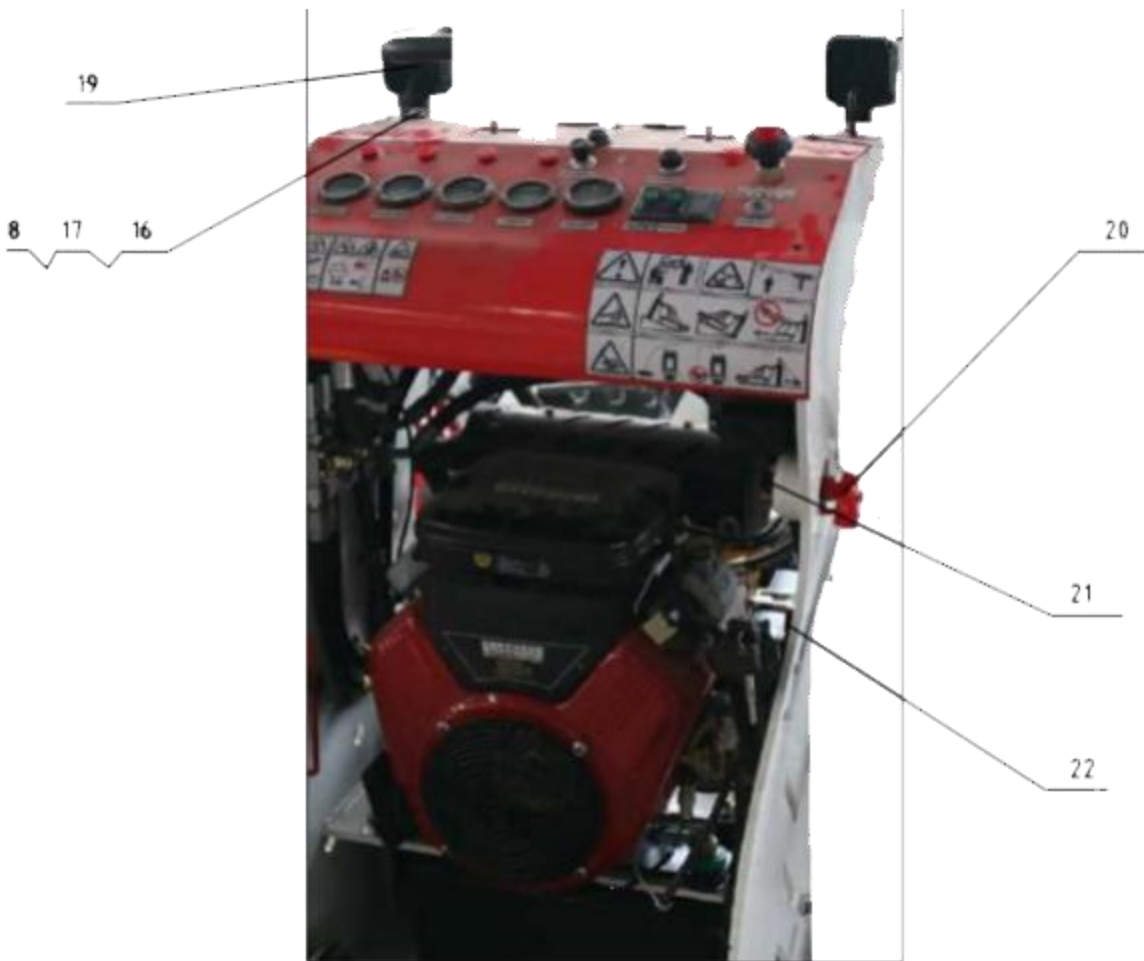
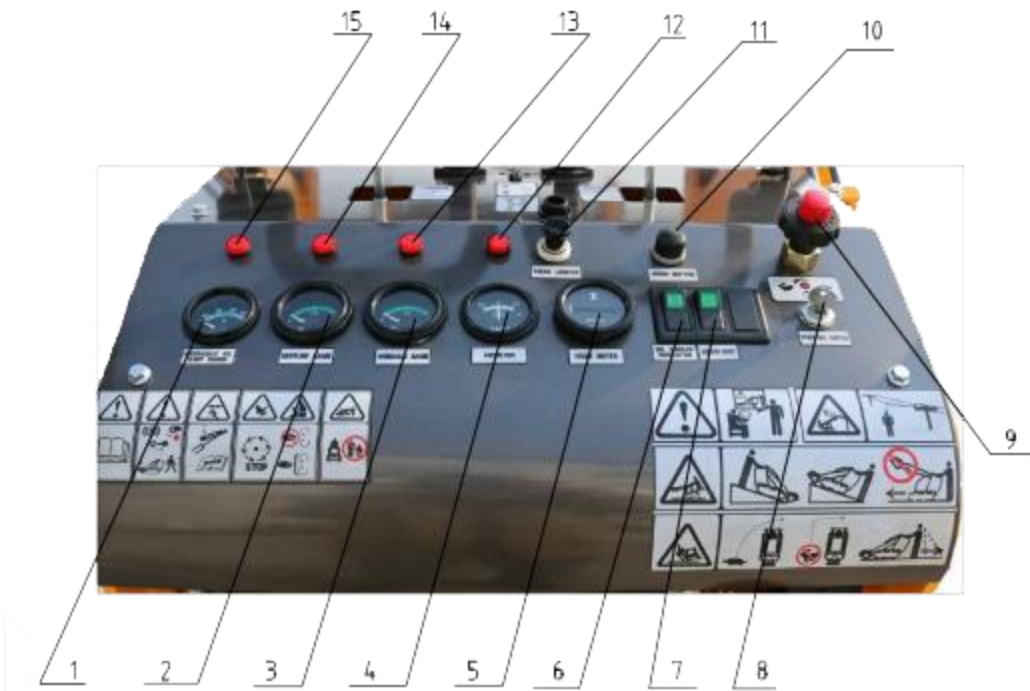
9. 操作总成 Operation Assy

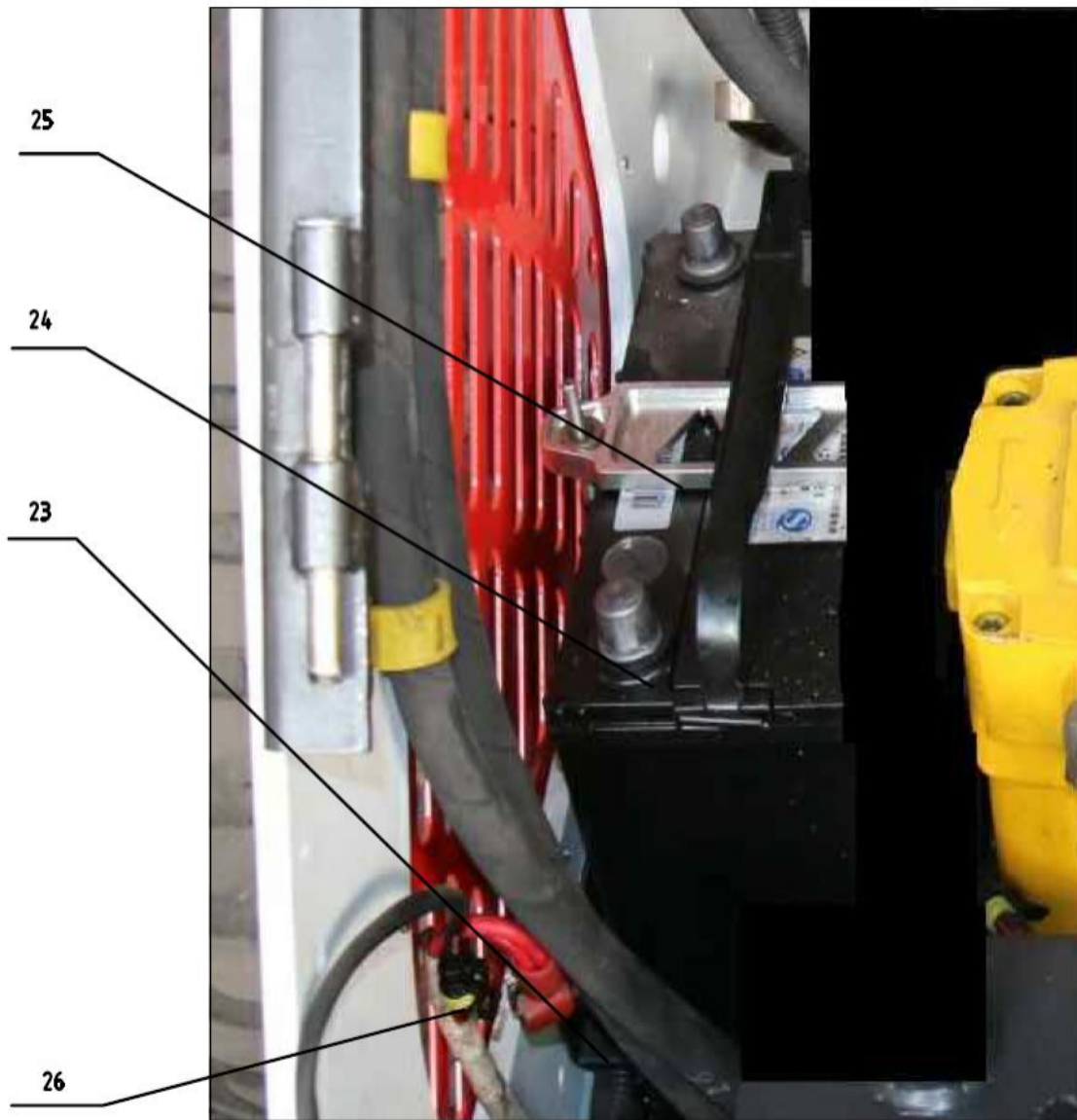


| No | Part No | 名称 | Description | Q'ty | Remark |
|----|-----------------|-----------|-----------------------------|------|--------|
| 1 | | 左把手焊合 | Left handle | 1 | |
| 2 | GB/T5782-2000 | 螺栓 M6*20 | Bolt M6*20 | 4 | |
| 3 | GB/T93-1987 | 弹垫 6 | Spring Washer 6 | 4 | |
| 4 | GB/T95-2002 | 平垫 6 | Washer 6 | 4 | |
| 5 | | 右把手焊合 | Right handle | 2 | |
| 6 | CG823-090006A-1 | 辅具手柄固定座 | Support, attachments handle | 3 | |
| 7 | | 多路阀辅具操纵杆 | Control rod , attachments | 2 | |
| 8 | GB/T5782-2000 | 螺栓 M10*25 | Bolt M10*25 | 2 | |
| 9 | GB/T93-1987 | 弹垫 10 | Spring Washer 10 | 2 | |
| 10 | GB/T95-2002 | 平垫 10 | Washer 10 | 2 | |
| 11 | | 多路阀行走操纵杆 | Control rod, traveling | 2 | |
| 12 | CG823-090002 | 操纵手柄套 1 | Sleeve 1, handle | 2 | |
| 13 | CG823-090003 | 辅具手柄套 | Also handle set | | |
| 14 | CG823-090004 | 操纵手柄套 2 | Sleeve 2, handle | 2 | |
| 15 | | 多路阀连接件 | Connecting, control valve | 2 | |

10. Electric System

10.1 电器零件图 Electric parts diagram

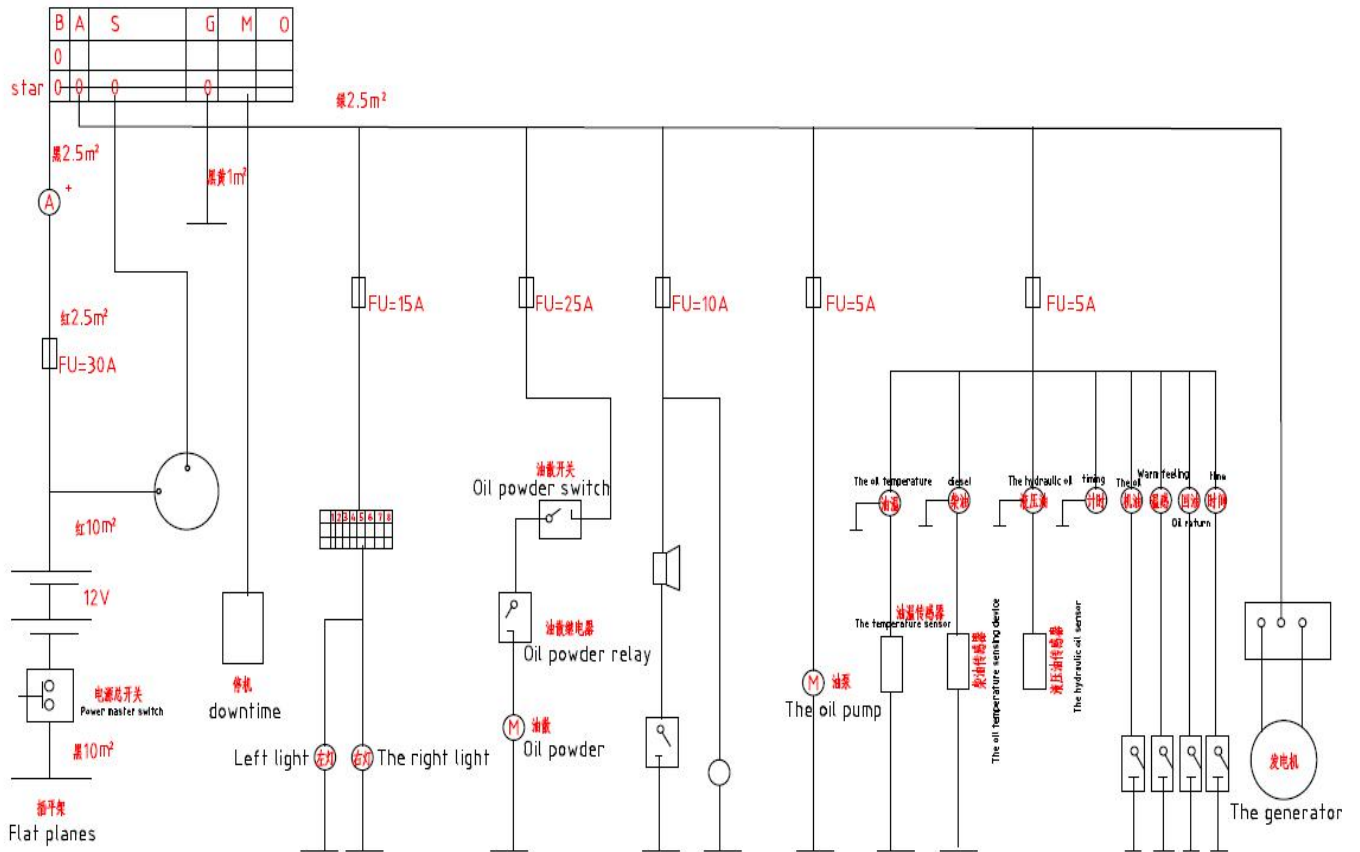




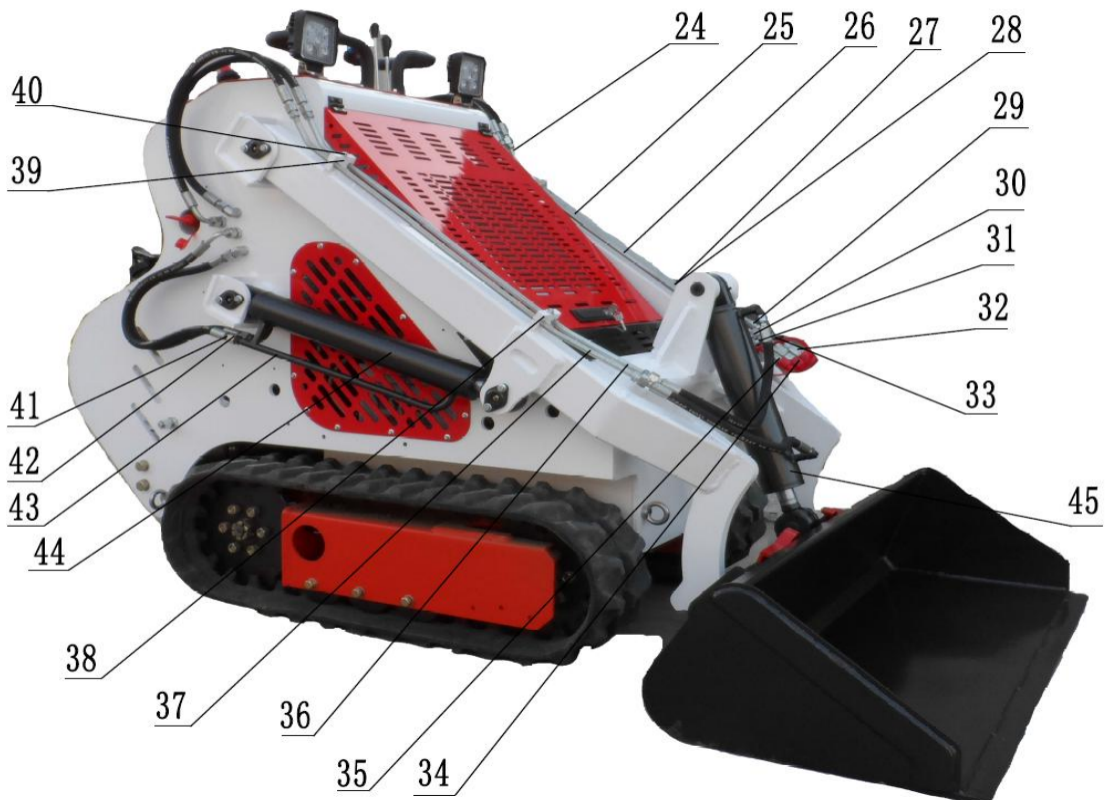
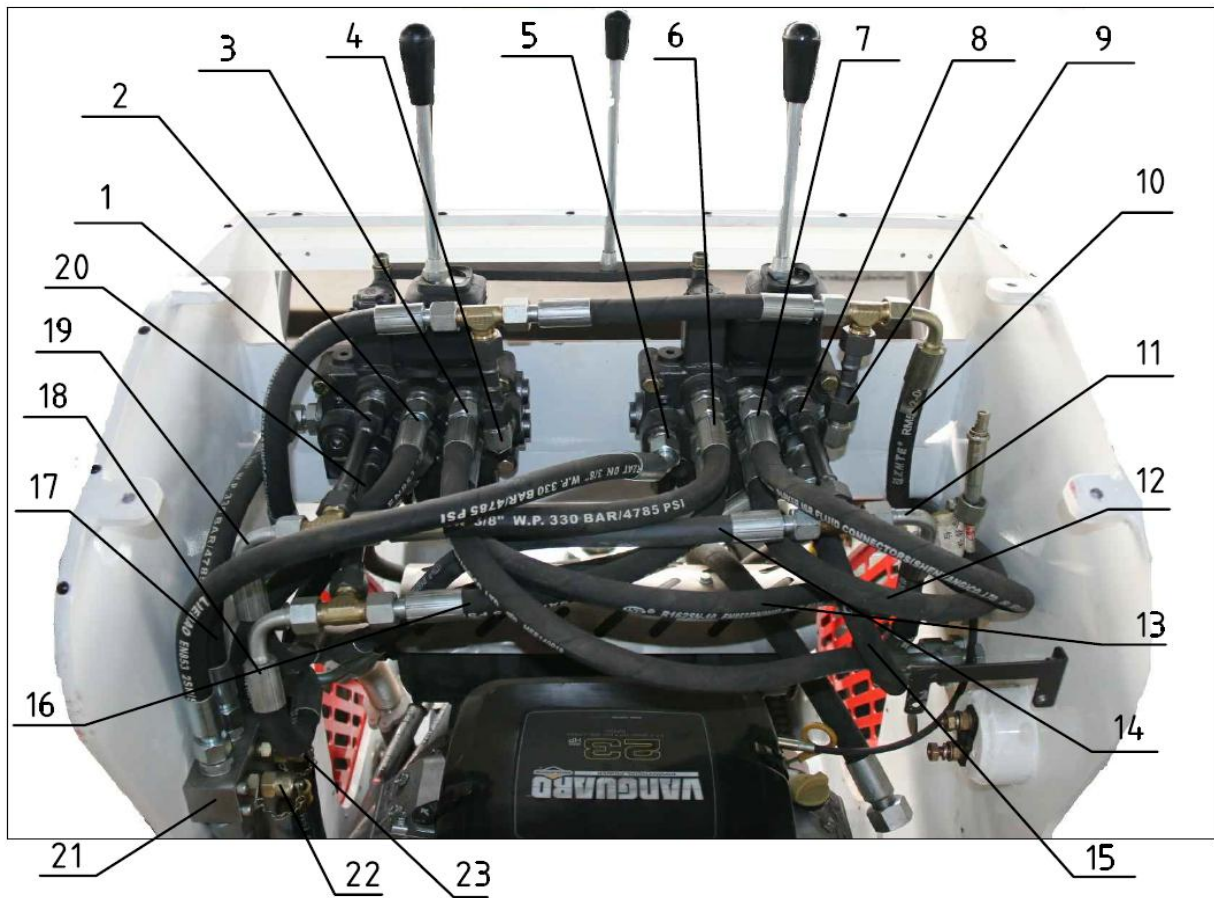
| No | Part No | 名称 | Description | Q'ty | Remark |
|----|-------------|---------|--------------------------|------|--------|
| 1 | YW142A(12V) | 油温表 | Oil temperature Meter | 1 | |
| 2 | | 汽油表 | Fuel gauge | 2 | |
| 3 | | 液压计 | Hydraulic pressure gauge | 1 | |
| 4 | | 电流表 | Ammeter | 1 | |
| 5 | 9-30V | 小时计 | Hour meter | 1 | |
| 6 | | 油冷却器指示器 | Oil cooler indicator | 1 | |
| 7 | HY036 | 大灯（防水） | Head light | 2 | |
| 8 | 4A 12VDC | 起动开关 | Starting switch | 1 | |
| 9 | LA39-11ZS | 急停按钮 | Emergency Push Button | 1 | |
| 10 | 4A 12VDC | 喇叭按钮 | Button, horn | 1 | |
| 11 | ZD134 | 点火开关 | Ignition switch | 1 | |
| 12 | | 电流报警 | The current alarm | | |

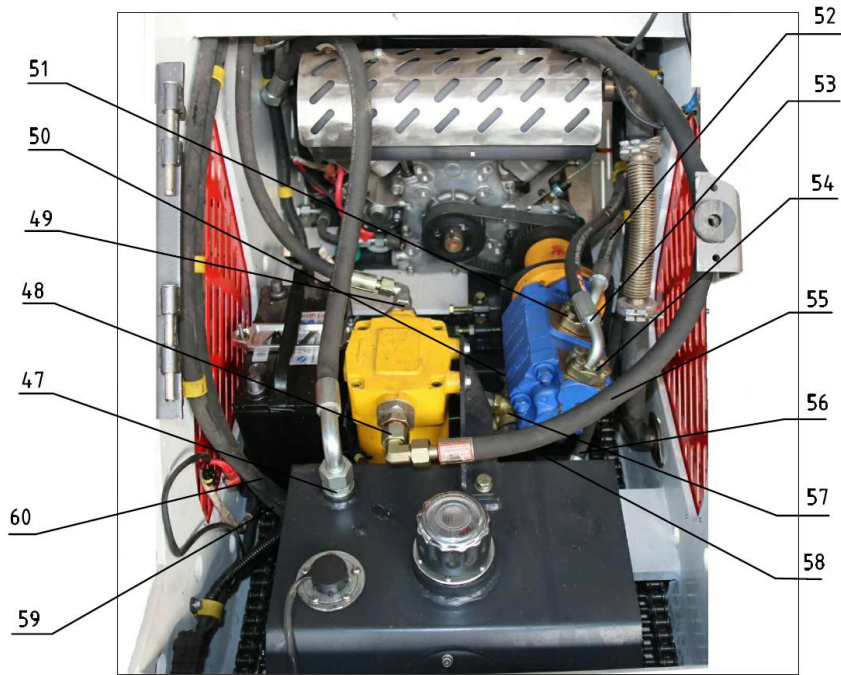
| | | | | | |
|----|---------------|----------------|----------------------------|---|--|
| 13 | | 液位计报警 | Liquid level alarm | 2 | |
| 14 | | 汽油报警 | Gas alarm | 2 | |
| 15 | | 油温报警 | The oil temperature alarm | | |
| 16 | GB/T5783-2000 | 六角头螺栓全螺纹 M4*15 | Bolt M4*15 | 2 | |
| 17 | GB/T95-2002 | 平垫 4 | Washer 4 | 2 | |
| 18 | GB/T93-1987 | 弹垫 4 | Spring Washer 4 | 2 | |
| 19 | | 大灯 | headlight | 2 | |
| 20 | CG823-110200 | 电源总开关 | Power source | 1 | |
| 21 | CG823-110020 | 电源总开关正极线总成 | Power source positive wire | 1 | |
| 22 | CG823-110050 | 整车线束 | Main Cable | 1 | |
| 23 | | 电瓶座 | The battery holder | | |
| 24 | | 电瓶 | The battery | | |
| 25 | CG823-010018 | 电瓶压紧板 | Pressure strip, Battery | 1 | |
| 26 | CG823-110030A | 电瓶接地线总成 | Battery Ground wire | 1 | |

10.2 电器系统线路图 Electric system diagram



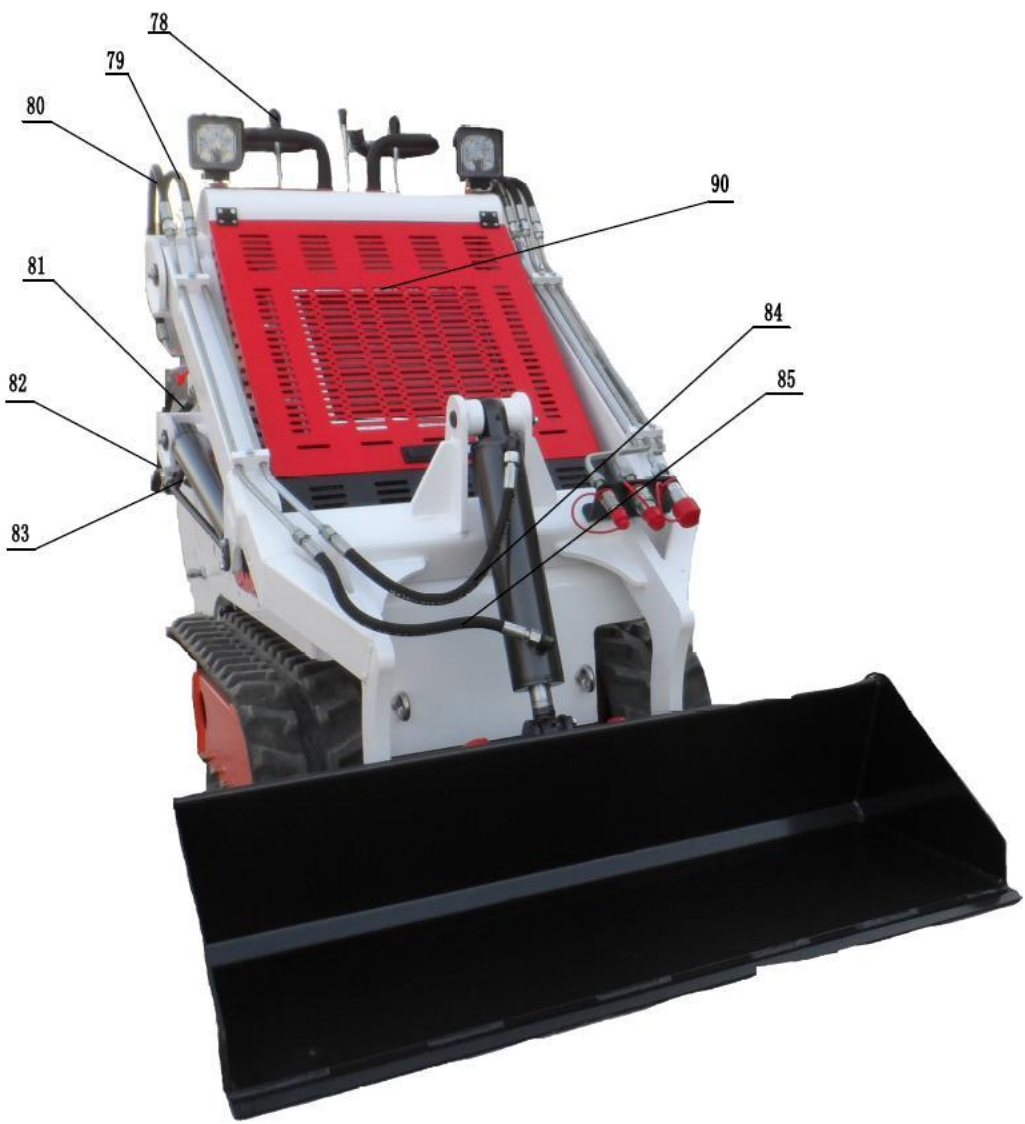
11. 液压系统总成 Hydraulic system assy

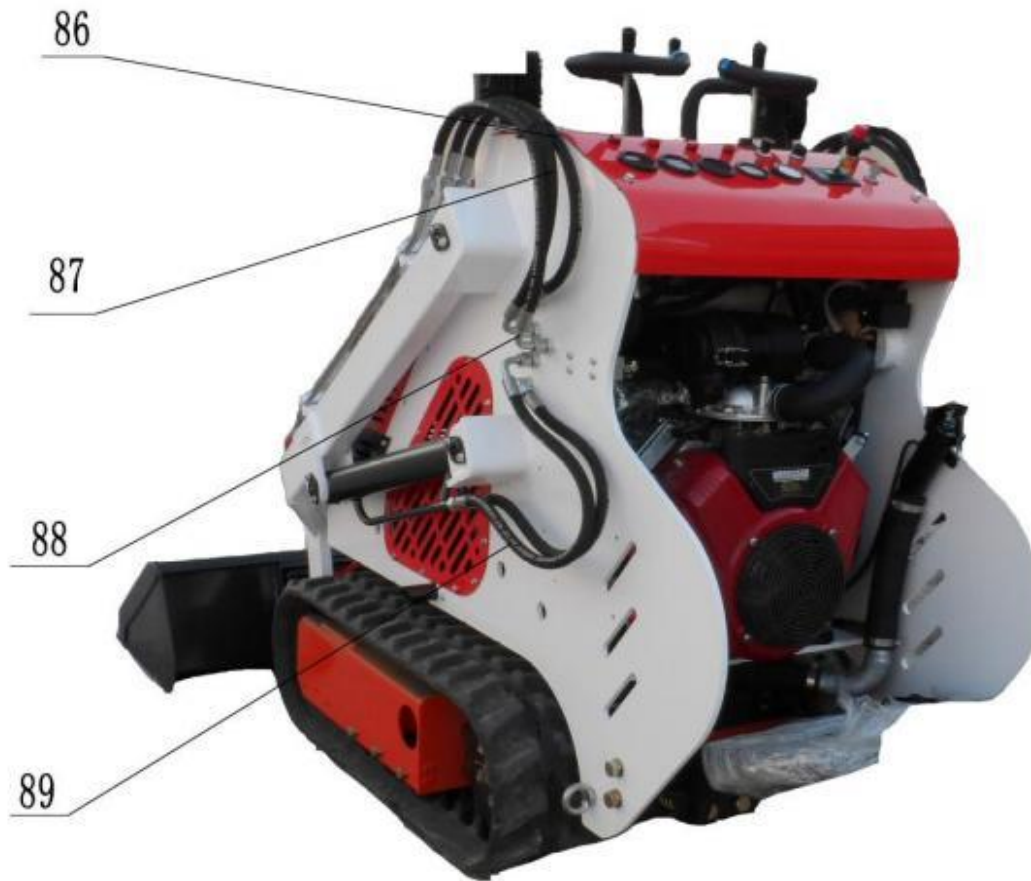




| No | Part No | 名称 | Description | Q'ty | Remark |
|----|---------------|----------|---------------------------------------|------|--------|
| 1 | CG823-085004 | 硬管 4 | Pipe 4 | 1 | |
| 2 | CG823-085008 | 胶管 8 | Hose 8 | 1 | |
| 3 | CG823-085005 | 胶管 5 | Hose 5 | 1 | |
| 4 | CG823-085031 | 左阀附具上硬管 | Upper pipe, left valve for attachment | 1 | |
| 5 | CG823-085032 | 胶管 6 | Hose 6 | 1 | |
| 6 | CG823-087009 | 胶管 7 | Hose 7 | 1 | |
| 7 | CG823-085013 | 胶管 8 | Hose 8 | 1 | |
| 8 | CG823-085010A | 硬管 10 | Pipe 10 | 1 | |
| 9 | CG823-085003A | 硬管 3 | Pipe 3 | 1 | |
| 10 | | 胶管 9 | Hose 9 | | |
| 11 | CG823-080005 | 胶管 10 | Hose 10 | | |
| 12 | CG823-085001 | 胶管 11 | Hose 11 | 1 | |
| 13 | CG823-085002 | 胶管 12 | Hose 12 | 1 | |
| 14 | CG823-085019 | 胶管 13 | Hose 13 | 1 | |
| 15 | CG823-085016 | 胶管 14 | Hose 14 | 1 | |
| 16 | CG823-085015 | 胶管 15 | Hose 15 | 1 | |
| 17 | CG823-085020 | 胶管 16 | Hose 16 | 1 | |
| 18 | CG823-085009 | 胶管 17 | Hose 17 | 1 | |
| 19 | CG823-085033 | 胶管 18 | Hose 18 | 1 | |
| 20 | CG823-085034 | 胶管 19 | Hose 19 | 1 | |
| 21 | CG823-085017 | 过渡块 | The transition piece | 1 | |
| 22 | | 测压接头 1 | Pressure joint 1 | 1 | |
| 23 | | 测压接头 2 | Pressure joint 2 | 1 | |
| 24 | CG823-085025 | 附具硬管 II | Pipe II, Attachment | 1 | |
| 25 | CG823-085026 | 附具硬管 III | Pipe III, Attachment | 1 | |
| 26 | CG823-085024A | 附具硬管 I | Pipe I, Attachment | 1 | |

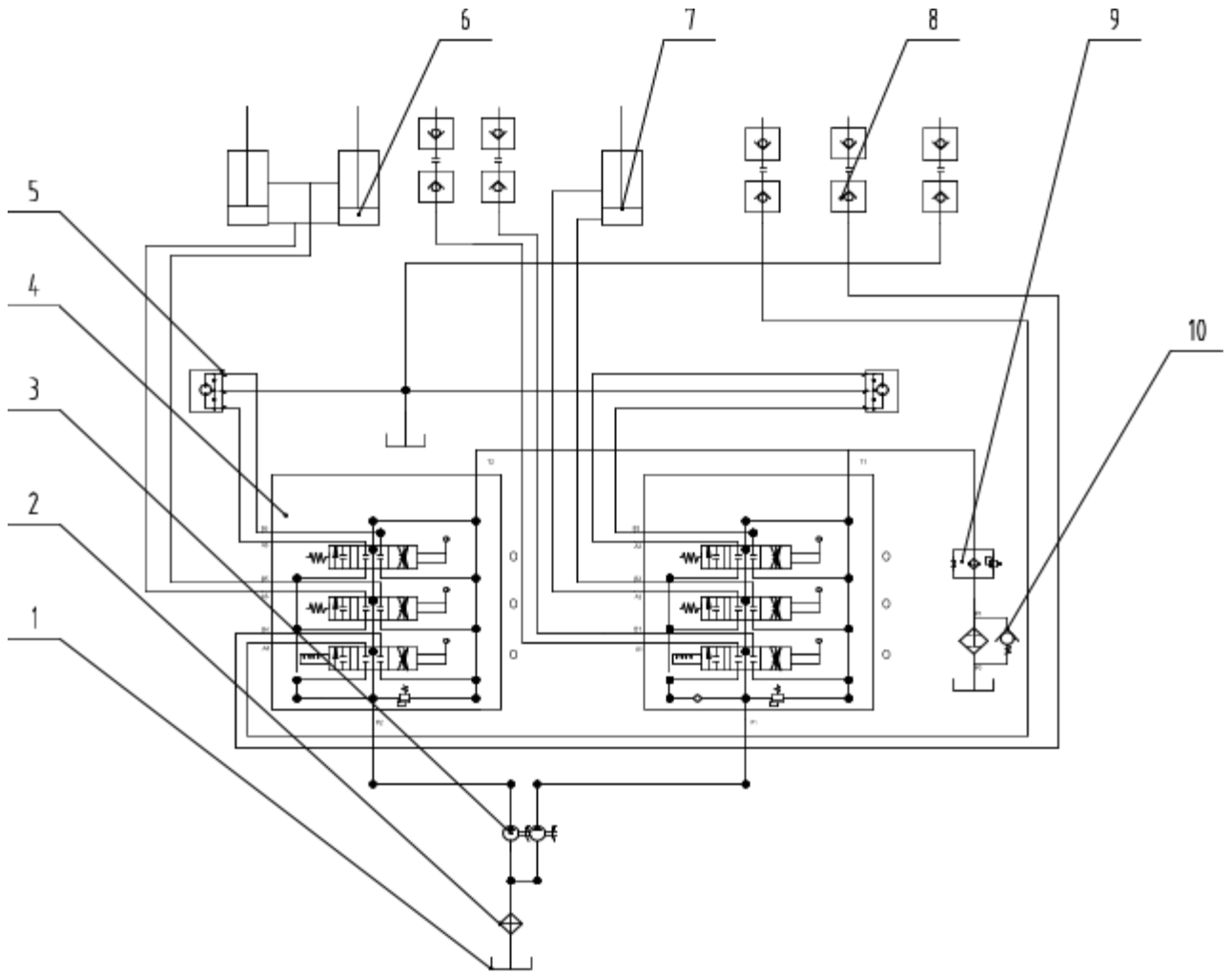
| | | | | | |
|----|---------------|--------------------------------|---|---|--|
| 27 | GB/T5787-1986 | 六角法兰面螺栓 M8*15 | Bolt M8*15 | 2 | |
| 28 | GB/T5787-1986 | 六角法兰面螺栓 M8*25 | Bolt M8*25 | 6 | |
| 29 | CG823-080007 | 附具回油管夹 | Oil return clamp for attachment | 2 | |
| 30 | 2C9-18 | 外螺纹内螺纹转换接头 90°弯, 2-M18*1.5 接头 | Joint 2-M18*1.5 | 1 | |
| 31 | CG823-087011 | 附具过板接头 (G3/8-M18*1.5H) | Joint (G3/8-M18*1.5H) | 1 | |
| 32 | CG823-087014 | LSQ-PT-03SF 接头 14 (G3/8 快速接头) | LSQ-PT-03SF Joint 14 | 1 | |
| 33 | CG823-087010 | 附具过板接头 (G1/2-M18*1.5H) | Joint (G1/2-M18*1.5H) | 4 | |
| 34 | CG823-087013 | LSQ-PT-04PF (G1/2 快换接头) | LSQ-PT-04PF (G1/2 Coupler) | 2 | |
| 35 | CG823-087012 | LSQ-PT-04SF (G1/2 快换接头) | LSQ-PT-04SF (G1/2 Coupler) | 2 | |
| 36 | CG823-085029A | 右臂翻斗内侧硬管 | Inner Pipe on right work arm for bucket | 1 | |
| 37 | CG823-085030A | 右臂翻斗外侧硬管 | Outer Pipe on right work arm for bucket | 1 | |
| 38 | CG823-085027 | 六角法兰面螺栓 M8*30 | Inner Pipe, right work arm | 1 | |
| 39 | CG823-085028 | 六角法兰面螺栓 M8*30 | Outside Pipe, right work arm | 1 | |
| 40 | GB/T5787-1986 | 压板 | Bolt M8*30 | 2 | |
| 41 | CG823-087020 | 1CI-18 接头 20 (铰接接头体, 配组合垫 2 个) | 1CI-18 Joint 20 | 6 | |
| 42 | CG823-087019 | V700M-18 | V700M-18 | 6 | |
| 43 | CG823-087023 | 硬管 23 | Pipe 23 | 1 | |
| 44 | CG823-081000A | 举升油缸 | Lifting cylinder | 2 | |
| 45 | CG823-082000A | 380 倾翻油缸 | Tilt cylinder | 1 | |
| 46 | CG823-087022 | 硬管 22 | Pipe 22 | 1 | |
| 47 | CG823-085035A | 胶管 | Hose | 1 | |
| 48 | CG823-087001 | 直角接头体 | The right Angle connector body | 1 | |
| 49 | CG823-087003 | 直角接头体 | The right Angle connector body | 1 | |
| 50 | CG823-087002 | 分体法兰 | Fission of the flange | 1 | |
| 51 | CG823-087001 | 分体法兰 1 | Fission of the flange1 | 1 | |
| 52 | CG823-087016 | 胶管 | Hose | 1 | |
| 53 | CG823-087009 | 胶管 | Hose | 1 | |
| 54 | CG823-087006 | 分体法兰 2 | Fission of the flange2 | 1 | |
| 55 | | 胶管 | Hose | 1 | |
| 56 | | 双联泵 | Double pump | 1 | |
| 57 | CG823-087017 | 分体法兰 3 | Fission of the flange3 | 2 | |
| | | 右多路阀 (弹簧复位) | Right Control Valve(Spring reverse) | 1 | |
| 58 | CG823-087007 | 胶管 | Hose | 1 | |
| | | 左多路阀 (钢球定位) | Left Control Valve(Ball Locking) | 1 | |
| | | 马达 | Motor | 2 | |
| 59 | CG823-087004 | 胶管 | Hose | 1 | |
| 60 | CG823-087005 | 胶管 | Hose | 1 | |





| No | Part No | 名称 | Description | Q'ty | Remark |
|----|---------------|---|--------------------|------|--------|
| 61 | CG823-086006B | 接头体 | The connector body | 1 | |
| 62 | CG823-086006A | 马达 | Motor | 1 | |
| 63 | CG823-080003 | 接头体 | The connector body | 1 | |
| 78 | CG823-086008B | 胶管 8B (2-M18*1.5H, L=650, 一端直角, 2层, 加尼龙护套) | Hose 8B | 1 | |
| 79 | CG823-086010B | 胶管 10B (2-M18*1.5H, L=760, 一端直角, 2层, 加尼龙护套) | Hose 10B | 1 | |
| 80 | CG823-086009B | 胶管 9B (2-M18*1.5H, L=720, 一端直角, 2层, 加尼龙护套) | Hose 9B | 1 | |
| 81 | CG823-086010B | 胶管 10B (2-M18*1.5H, L=760, 一端直角, 2层, 加尼龙护套) | Hose 10B | 1 | |
| 82 | CG823-086014 | 胶管 14 (2-M18*1.5H, L=600, 一端直角, 2层, 加尼龙护套) | Hose 14 | 2 | |
| 83 | CG823-080001A | 支臂下橡胶块 | Rubber | 2 | |
| | 70-89 | 喉箍 | Clip | 2 | |
| 84 | CG823-086012A | 胶管 12A (2-M18*1.5H, L=350, 2层, 加尼龙护套) | Hose 12A | 1 | |
| 85 | CG823-086013B | 胶管 13B (2-M18*1.5H, L=350, 2层, 加尼龙护套) | Hose 13B | 1 | |
| 86 | CG823-086017C | 胶管 17 (2-M18*1.5H, L=650, 一端直角, 2层, 加尼龙护套) | Hose 17 | 1 | |
| 87 | CG823-086009B | 胶管 9B (2-M18*1.5H, L=720, 一端直角, 2层, 加尼龙护套) | Hose 9B | 1 | |
| 88 | CG823-086010B | 胶管 10B (2-M18*1.5H, L=760, 一端直角, 2层, 加尼龙护套) | Hose 10B | 1 | |
| 89 | CG823-086014 | 胶管 14 (2-M18*1.5H, L=600, 一端直角, 2层, 加尼龙护套) | Hose 14 | 2 | |
| 90 | CG823-086015 | 水箱 | The water tank | 1 | |

液压原理图 Hydraulic System diagram



- 1、液压油箱 2、滤油器 3、双联齿轮泵 4、多路阀 5、马达
 6、举升油缸 7、翻斗油缸 8、快速接头 9、散热器 10、回油
 滤清器

1. Hydraulic oil tank 2. Oil filter 3. Gear Pump 4 Control Valve 5 Motor
 6 Lifting cylinder 7 Bucket Cylinder 8 Coupler 9 Radiator 10 Return Oil Filter